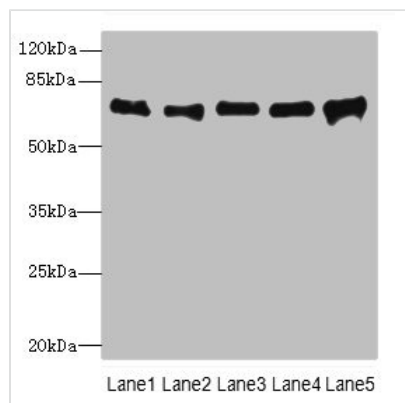




SPDL1 Antibody

| | |
|----------------------------|--|
| Product Code | CSB-PA842662LA01HU |
| Storage | Upon receipt, store at -20°C or -80°C. Avoid repeated freeze. |
| Uniprot No. | Q96EA4 |
| Immunogen | Recombinant Human Protein Spindly protein (1-300AA) |
| Raised In | Rabbit |
| Species Reactivity | Human |
| Tested Applications | ELISA, WB, IHC; Recommended dilution: WB:1:1000-1:5000, IHC:1:20-1:200 |
| Form | Liquid |
| Conjugate | Non-conjugated |
| Storage Buffer | Preservative: 0.03% Proclin 300 Constituents: 50% Glycerol, 0.01M PBS, PH 7.4 |
| Purification Method | >95%, Protein G purified |
| Isotype | IgG |
| Clonality | Polyclonal |
| Alias | Protein Spindly (hSpindly) (Arsenite-related gene 1 protein) (Coiled-coil domain-containing protein 99) (Rhabdomyosarcoma antigen MU-RMS-40.4A) (Spindle apparatus coiled-coil domain-containing protein 1), SPDL1, CCDC99 |
| Immunogen Species | Homo sapiens (Human) |
| Research Area | Cell Biology |
| Target Names | SPDL1 |

Image



Western blot

All lanes: SPDL1 antibody at 4µg/ml

Lane 1: Hela whole cell lysate

Lane 2: 293T whole cell lysate

Lane 3: Jurkat whole cell lysate

Lane 4: A549 whole cell lysate

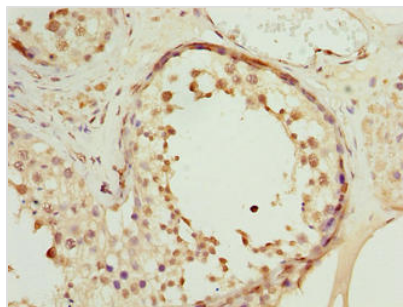
Lane 5: K562 whole cell lysate

Secondary

Goat polyclonal to rabbit IgG at 1/10000 dilution

Predicted band size: 71, 59, 62 kDa

Observed band size: 71 kDa



Immunohistochemistry of paraffin-embedded human testis tissue using CSB-PA842662LA01HU at dilution of 1:100