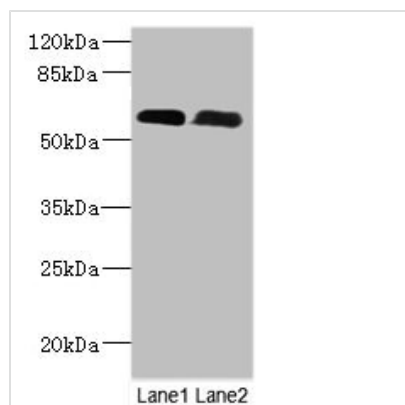




PNPLA1 Antibody

Product Code	CSB-PA843295LA01HU
Storage	Upon receipt, store at -20°C or -80°C. Avoid repeated freeze.
Uniprot No.	Q8N8W4
Immunogen	Recombinant Human Patatin-like phospholipase domain-containing protein 1 protein (101-300AA)
Raised In	Rabbit
Species Reactivity	Human, Mouse
Tested Applications	ELISA, WB, IHC, IF; Recommended dilution: WB:1:1000-1:5000, IHC:1:20-1:200, IF:1:50-1:200
Form	Liquid
Conjugate	Non-conjugated
Storage Buffer	Preservative: 0.03% Proclin 300 Constituents: 50% Glycerol, 0.01M PBS, PH 7.4
Purification Method	>95%, Protein G purified
Isotype	IgG
Clonality	Polyclonal
Alias	Patatin-like phospholipase domain-containing protein 1 (EC 3.1.1.-), PNPLA1
Immunogen Species	Homo sapiens (Human)
Research Area	Cancer
Target Names	PNPLA1

Image



Western Blot

All lanes: PNPLA1 antibody at 12μg/ml

Lane 1: Mouse spleen tissue

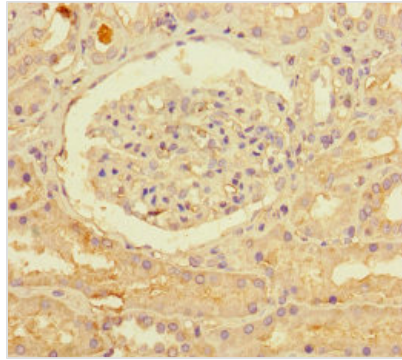
Lane 2: Mouse skeletal muscle tissue

Secondary

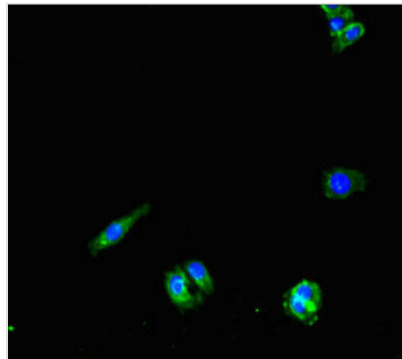
Goat polyclonal to rabbit IgG at 1/10000 dilution

Predicted band size: 58, 48, 49 kDa

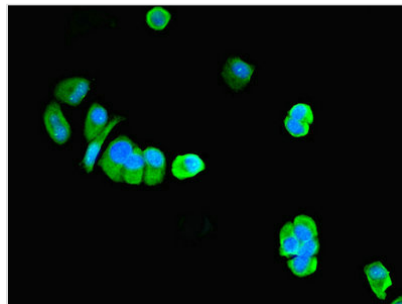
Observed band size: 58 kDa



Immunohistochemistry of paraffin-embedded human kidney tissue using CSB-PA843295LA01HU at dilution of 1:100



Immunofluorescent analysis of HepG2 cells using CSB-PA843295LA01HU at dilution of 1:100 and Alexa Fluor 488-conjugated AffiniPure Goat Anti-Rabbit IgG(H+L)



Immunofluorescent analysis of MCF-7 cells using CSB-PA843295LA01HU at dilution of 1:100 and Alexa Fluor 488-conjugated AffiniPure Goat Anti-Rabbit IgG(H+L)