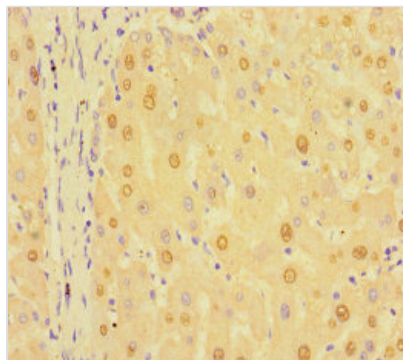




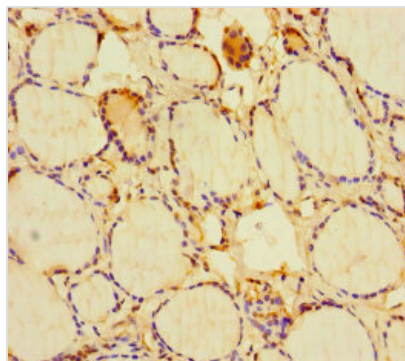
RIT1 Antibody

Product Code	CSB-PA846116LA01HU
Storage	Upon receipt, store at -20°C or -80°C. Avoid repeated freeze.
Uniprot No.	Q92963
Immunogen	Recombinant Human GTP-binding protein Rit1 protein (1-219AA)
Raised In	Rabbit
Species Reactivity	Human
Tested Applications	ELISA, IHC; Recommended dilution: IHC:1:20-1:200
Form	Liquid
Conjugate	Non-conjugated
Storage Buffer	Preservative: 0.03% Proclin 300 Constituents: 50% Glycerol, 0.01M PBS, PH 7.4
Purification Method	>95%, Protein G purified
Isotype	IgG
Clonality	Polyclonal
Alias	GTP-binding protein Rit1 (Ras-like protein expressed in many tissues) (Ras-like without CAAX protein 1), RIT1, RIBB RIT ROC1
Immunogen Species	Homo sapiens (Human)
Research Area	Cell Biology
Target Names	RIT1

Image



Immunohistochemistry of paraffin-embedded human liver tissue using CSB-PA846116LA01HU at dilution of 1:100



Immunohistochemistry of paraffin-embedded human thyroid tissue using CSB-PA846116LA01HU at dilution of 1:100

Usage

For Research Use Only. Not for use in diagnostic or therapeutic procedures.