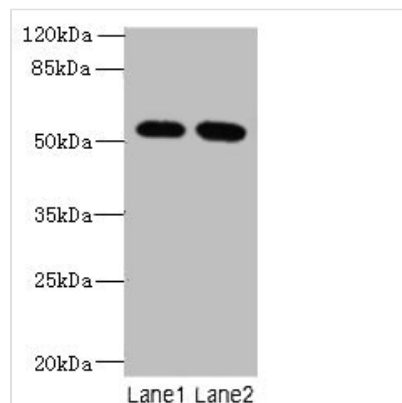




# INTS14 Antibody

<b>Product Code</b>	CSB-PA847227LA01HU
<b>Storage</b>	Upon receipt, store at -20°C or -80°C. Avoid repeated freeze.
<b>Uniprot No.</b>	Q96SY0
<b>Immunogen</b>	Recombinant Human Integrator complex subunit 14 protein (231-518AA)
<b>Raised In</b>	Rabbit
<b>Species Reactivity</b>	Human, Mouse
<b>Tested Applications</b>	ELISA, WB, IHC; Recommended dilution: WB:1:1000-1:5000, IHC:1:20-1:200
<b>Form</b>	Liquid
<b>Conjugate</b>	Non-conjugated
<b>Storage Buffer</b>	Preservative: 0.03% Proclin 300 Constituents: 50% Glycerol, 0.01M PBS, PH 7.4
<b>Purification Method</b>	>95%, Protein G purified
<b>Isotype</b>	IgG
<b>Clonality</b>	Polyclonal
<b>Alias</b>	Integrator complex subunit 14 (von Willebrand factor A domain-containing protein 9), INTS14, C15orf44 VWA9
<b>Immunogen Species</b>	Homo sapiens (Human)
<b>Research Area</b>	Cell Biology
<b>Target Names</b>	INTS14

## Image



Western blot

All lanes: INTS14 antibody at 4µg/ml

Lane 1: Hela whole cell lysate

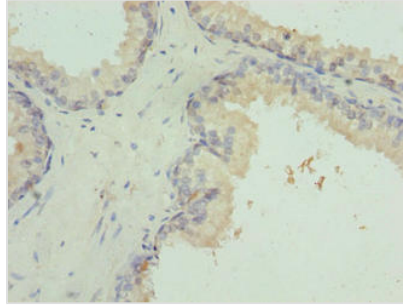
Lane 2: NIH/3T3 whole cell lysate

Secondary

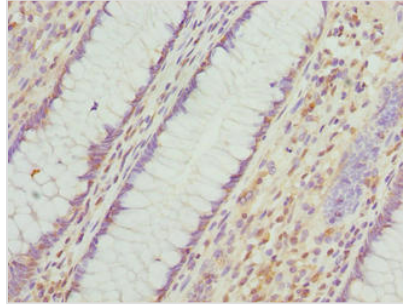
Goat polyclonal to rabbit IgG at 1/10000 dilution

Predicted band size: 58, 10, 49, 51 kDa

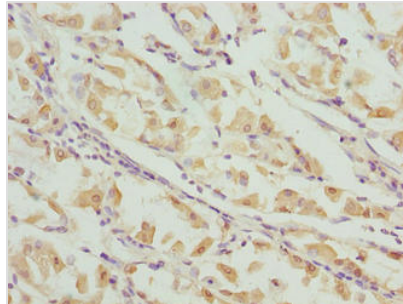
Observed band size: 58 kDa



Immunohistochemistry of paraffin-embedded human prostate cancer using CSB-PA847227LA01HU at dilution of 1:100



Immunohistochemistry of paraffin-embedded human colon cancer using CSB-PA847227LA01HU at dilution of 1:100



Immunohistochemistry of paraffin-embedded human gastric cancer using CSB-PA847227LA01HU at dilution of 1:100