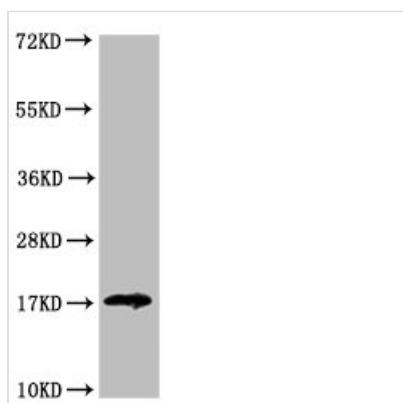




# LGALS14 Antibody

|                            |                                                                                                               |
|----------------------------|---------------------------------------------------------------------------------------------------------------|
| <b>Product Code</b>        | CSB-PA848400LA01HU                                                                                            |
| <b>Storage</b>             | Upon receipt, store at -20°C or -80°C. Avoid repeated freeze.                                                 |
| <b>Uniprot No.</b>         | Q8TCE9                                                                                                        |
| <b>Immunogen</b>           | Recombinant Human Placental protein 13-like protein (31-139AA)                                                |
| <b>Raised In</b>           | Rabbit                                                                                                        |
| <b>Species Reactivity</b>  | Human                                                                                                         |
| <b>Tested Applications</b> | ELISA, WB; Recommended dilution: WB:1:500-1:5000                                                              |
| <b>Form</b>                | Liquid                                                                                                        |
| <b>Conjugate</b>           | Non-conjugated                                                                                                |
| <b>Storage Buffer</b>      | Preservative: 0.03% Proclin 300<br>Constituents: 50% Glycerol, 0.01M PBS, PH 7.4                              |
| <b>Purification Method</b> | >95%, Protein G purified                                                                                      |
| <b>Isotype</b>             | IgG                                                                                                           |
| <b>Clonality</b>           | Polyclonal                                                                                                    |
| <b>Alias</b>               | Placental protein 13-like (Charcot-Leyden crystal protein 2) (CLC2)<br>(Galectin-14) (Gal-14), LGALS14, PPL13 |
| <b>Immunogen Species</b>   | Homo sapiens (Human)                                                                                          |
| <b>Research Area</b>       | Cell Biology                                                                                                  |
| <b>Target Names</b>        | LGALS14                                                                                                       |

## Image



Western Blot  
 Positive WB detected in: HEK293 whole cell lysate  
 All lanes: LGALS14 antibody at 3.2µg/ml  
 Secondary  
 Goat polyclonal to rabbit IgG at 1/50000 dilution  
 Predicted band size: 17, 20 kDa  
 Observed band size: 17 kDa

**Usage** For Research Use Only. Not for use in diagnostic or therapeutic procedures.