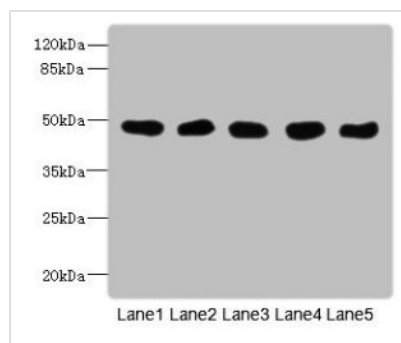




# GCDH Antibody

<b>Product Code</b>	CSB-PA849798LA01HU
<b>Storage</b>	Upon receipt, store at -20°C or -80°C. Avoid repeated freeze.
<b>Uniprot No.</b>	Q92947
<b>Immunogen</b>	Recombinant Human Glutaryl-CoA dehydrogenase, mitochondrial protein (45-300AA)
<b>Raised In</b>	Rabbit
<b>Species Reactivity</b>	Human, Mouse
<b>Tested Applications</b>	ELISA, WB, IHC, IP; Recommended dilution: WB:1:500-1:5000, IHC:1:20-1:200, IP:1:200-1:2000
<b>Form</b>	Liquid
<b>Conjugate</b>	Non-conjugated
<b>Storage Buffer</b>	Preservative: 0.03% Proclin 300 Constituents: 50% Glycerol, 0.01M PBS, PH 7.4
<b>Purification Method</b>	>95%, Protein G purified
<b>Isotype</b>	IgG
<b>Clonality</b>	Polyclonal
<b>Alias</b>	Glutaryl-CoA dehydrogenase, mitochondrial (GCD) (EC 1.3.8.6), GCDH
<b>Immunogen Species</b>	Homo sapiens (Human)
<b>Research Area</b>	Tags & Cell Markers
<b>Target Names</b>	GCDH

## Image



### Western Blot

All lanes: GCDH antibody at 8μg/ml

Lane 1: Mouse kidney tissue

Lane 2: Mouse liver tissue

Lane 3: Hela whole cell lysate

Lane 4: MCF-7 whole cell lysate

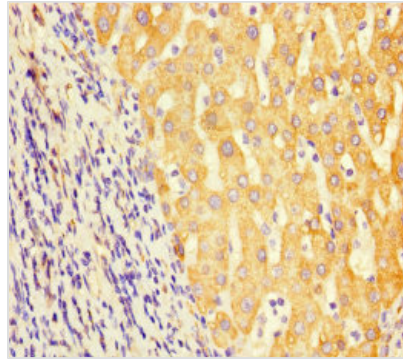
Lane 5: LO2 whole cell lysate

Secondary

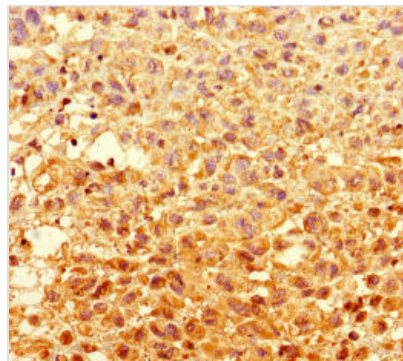
Goat polyclonal to rabbit IgG at 1/10000 dilution

Predicted band size: 49, 48 kDa

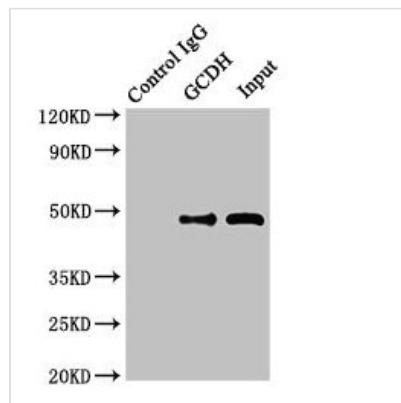
Observed band size: 49 kDa



Immunohistochemistry of paraffin-embedded human liver cancer using CSB-PA849798LA01HU at dilution of 1:100



Immunohistochemistry of paraffin-embedded human melanoma using CSB-PA849798LA01HU at dilution of 1:100



Immunoprecipitating GCDH in HeLa whole cell lysate

Lane 1: Rabbit control IgG instead of (1 $\mu$ g) instead of CSB-PA849798LA01HU in HeLa whole cell lysate. For western blotting, a HRP-conjugated Protein G antibody was used as the secondary antibody (1/2000)

Lane 2: CSB-PA849798LA01HU (8 $\mu$ g) + HeLa whole cell lysate (500 $\mu$ g)

Lane 3: HeLa whole cell lysate (10 $\mu$ g)