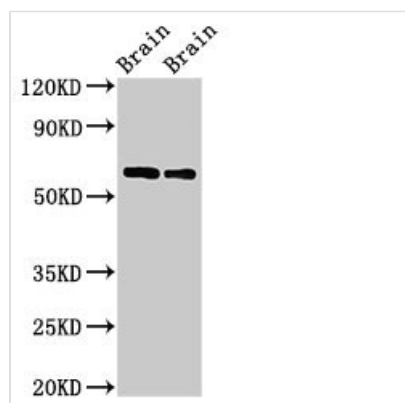




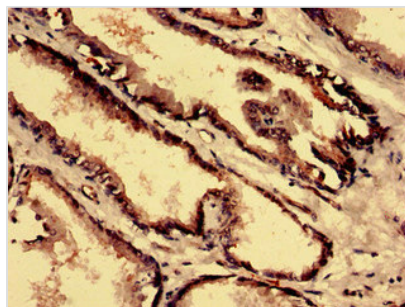
CPNE4 Antibody

Product Code	CSB-PA850253LA01HU
Storage	Upon receipt, store at -20°C or -80°C. Avoid repeated freeze.
Uniprot No.	Q96A23
Immunogen	Recombinant Human Copine-4 protein (1-280AA)
Raised In	Rabbit
Species Reactivity	Human, Mouse, Rat
Tested Applications	ELISA, WB, IHC, IF; Recommended dilution: WB:1:500-1:5000, IHC:1:20-1:200, IF:1:50-1:200
Form	Liquid
Conjugate	Non-conjugated
Storage Buffer	Preservative: 0.03% Proclin 300 Constituents: 50% Glycerol, 0.01M PBS, PH 7.4
Purification Method	>95%, Protein G purified
Isotype	IgG
Clonality	Polyclonal
Alias	Copine-4 (Copine IV) (Copine-8), CPNE4
Immunogen Species	Homo sapiens (Human)
Research Area	Signal Transduction
Target Names	CPNE4

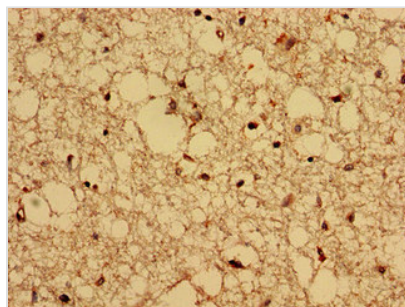
Image



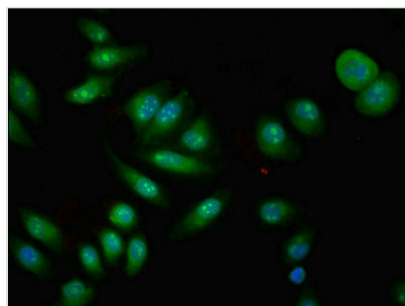
Western Blot
 Positive WB detected in: Rat brain tissue, Mouse brain tissue
 All lanes: CPNE4 antibody at 2µg/ml
 Secondary
 Goat polyclonal to rabbit IgG at 1/50000 dilution
 Predicted band size: 63, 65 kDa
 Observed band size: 63 kDa



Immunohistochemistry analysis of human prostate tissue using CSB-PA850253LA01HU at dilution of 1:100



Immunohistochemistry analysis of human brain tissue using CSB-PA850253LA01HU at dilution of 1:100



Immunofluorescent analysis of A549 cells using CSB-PA850253LA01HU at dilution of 1:100 and Alexa Fluor 488-conjugated AffiniPure Goat Anti-Rabbit IgG(H+L)

Usage

For Research Use Only. Not for use in diagnostic or therapeutic procedures.