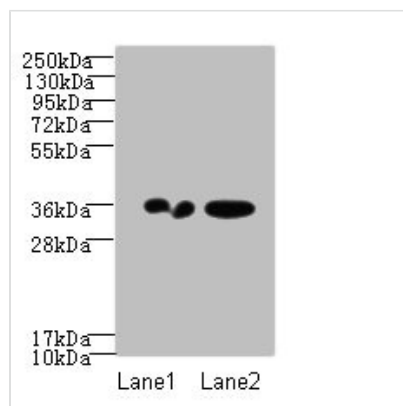




RPRD1A Antibody

| | |
|----------------------------|--|
| Product Code | CSB-PA850404LA01HU |
| Storage | Upon receipt, store at -20°C or -80°C. Avoid repeated freeze. |
| Uniprot No. | Q96P16 |
| Immunogen | Recombinant Human Regulation of nuclear pre-mRNA domain-containing protein 1A protein (2-276AA) |
| Raised In | Rabbit |
| Species Reactivity | Human |
| Tested Applications | ELISA, WB; Recommended dilution: WB:1:1000-1:5000 |
| Form | Liquid |
| Conjugate | Non-conjugated |
| Storage Buffer | Preservative: 0.03% Proclin 300 Constituents: 50% Glycerol, 0.01M PBS, PH 7.4 |
| Purification Method | >95%, Protein G purified |
| Isotype | IgG |
| Clonality | Polyclonal |
| Alias | Regulation of nuclear pre-mRNA domain-containing protein 1A (Cyclin-dependent kinase inhibitor 2B-related protein) (p15INK4B-related protein), RPRD1A, P15RS |
| Immunogen Species | Homo sapiens (Human) |
| Research Area | Cell Biology |
| Target Names | RPRD1A |

Image



Western blot

All lanes: RPRD1A antibody at 2μg/ml

Lane 1: A431 whole cell lysate

Lane 2: Jurkat whole cell lysate

Secondary

Goat polyclonal to Rabbit IgG at 1/10000 dilution

Predicted band size: 36, 32 kDa

Observed band size: 36 kDa