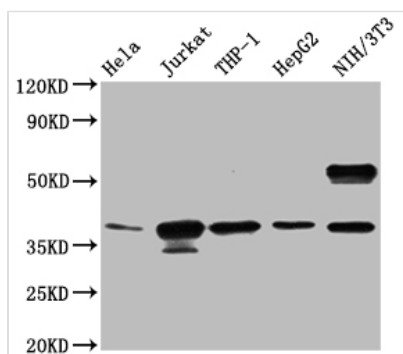




# CLYBL Antibody

<b>Product Code</b>	CSB-PA850772LA01HU
<b>Storage</b>	Upon receipt, store at -20°C or -80°C. Avoid repeated freeze.
<b>Uniprot No.</b>	Q8N0X4
<b>Immunogen</b>	Recombinant Human Citrate lyase subunit beta-like protein, mitochondrial protein
<b>Raised In</b>	Rabbit
<b>Species Reactivity</b>	Human, Mouse
<b>Tested Applications</b>	ELISA, WB, IHC; Recommended dilution: WB:1:1000-1:5000, IHC:1:20-1:200
<b>Form</b>	Liquid
<b>Conjugate</b>	Non-conjugated
<b>Storage Buffer</b>	Preservative: 0.03% Proclin 300 Constituents: 50% Glycerol, 0.01M PBS, PH 7.4
<b>Purification Method</b>	Affinity purification
<b>Isotype</b>	IgG
<b>Clonality</b>	Polyclonal
<b>Product Type</b>	Polyclonal Antibody
<b>Immunogen Species</b>	Homo sapiens (Human)
<b>Research Area</b>	Others
<b>Target Names</b>	CLYBL

## Image



### Western Blot

Positive WB detected in: HeLa whole cell lysate, Jurkat whole cell lysate, THP-1 whole cell lysate, HepG2 whole cell lysate, NIH/3T3 whole cell lysate

All lanes: CLYBL antibody at 1:1000

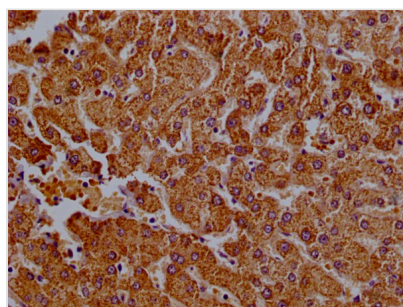
### Secondary

Goat polyclonal to rabbit IgG at 1/50000 dilution

Predicted band size: 38, 34 KDa

Observed band size: 38 KDa

Exposure time?5min



IHC image of CSB-PA850772LA01HU diluted at 1:50 and staining in paraffin-embedded human liver tissue performed on a Leica Bond<sup>TM</sup> system. After dewaxing and hydration, antigen retrieval was mediated by high pressure in a citrate buffer (pH 6.0). Section was blocked with 10% normal goat serum 30min at 37°. Then primary antibody (1% BSA) was incubated at 4°C overnight. The primary is detected by a Goat anti-Mouse IgG labeled by HRP and visualized



using 0.05% DAB.

---