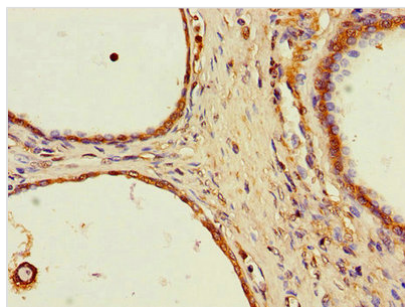




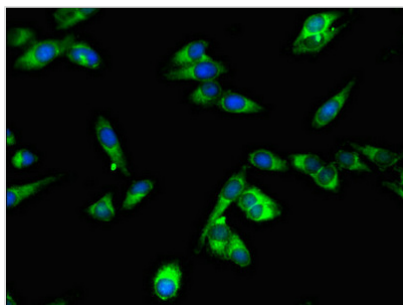
SPPL2A Antibody

| | |
|----------------------------|---|
| Product Code | CSB-PA855050LA01HU |
| Storage | Upon receipt, store at -20°C or -80°C. Avoid repeated freeze. |
| Uniprot No. | Q8TCT8 |
| Immunogen | Recombinant Human Signal peptide peptidase-like 2A protein (26-172AA) |
| Raised In | Rabbit |
| Species Reactivity | Human |
| Tested Applications | ELISA, WB, IHC, IF; Recommended dilution: WB:1:2000-1:5000, IHC:1:20-1:200, IF:1:50-1:200 |
| Form | Liquid |
| Conjugate | Non-conjugated |
| Storage Buffer | Preservative: 0.03% Proclin 300 Constituents: 50% Glycerol, 0.01M PBS, PH 7.4 |
| Purification Method | >95%, Protein G purified |
| Isotype | IgG |
| Clonality | Polyclonal |
| Alias | Signal peptide peptidase-like 2A (SPP-like 2A) (SPPL2a) (EC 3.4.23.-) (Intramembrane protease 3) (IMP-3) (Presenilin-like protein 2), SPPL2A, IMP3 PSL2 |
| Immunogen Species | Homo sapiens (Human) |
| Research Area | Cell Biology |
| Target Names | SPPL2A |

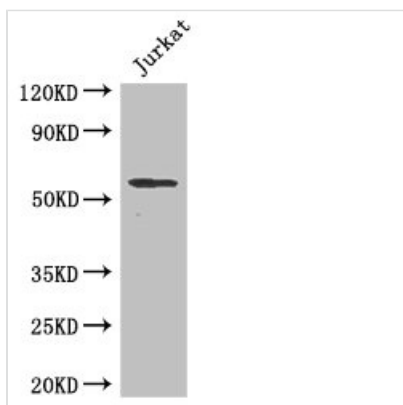
Image



Immunohistochemistry of paraffin-embedded human prostate cancer using CSB-PA855050LA01HU at dilution of 1:100



Immunofluorescent analysis of HeLa cells using CSB-PA855050LA01HU at dilution of 1:100 and Alexa Fluor 488-conjugated AffiniPure Goat Anti-Rabbit IgG(H+L)



Western Blot
Positive WB detected in: Jurkat whole cell lysate
All lanes: SPPL2A antibody at 2µg/ml
Secondary
Goat polyclonal to rabbit IgG at 1/50000 dilution
Predicted band size: 59 kDa
Observed band size: 59 kDa

Usage

For Research Use Only. Not for use in diagnostic or therapeutic procedures.