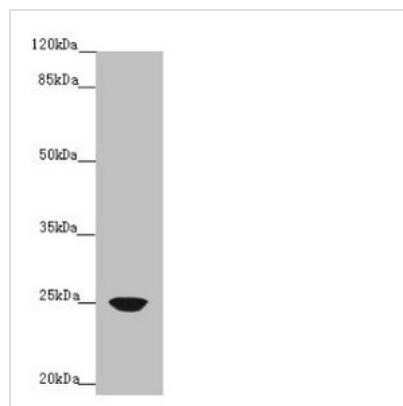




# FAM3C Antibody

<b>Product Code</b>	CSB-PA856401LA01HU
<b>Storage</b>	Upon receipt, store at -20°C or -80°C. Avoid repeated freeze.
<b>Uniprot No.</b>	Q92520
<b>Immunogen</b>	Recombinant Human Protein FAM3C protein (31-227AA)
<b>Raised In</b>	Rabbit
<b>Species Reactivity</b>	Human
<b>Tested Applications</b>	ELISA, WB; Recommended dilution: WB:1:1000-1:5000
<b>Form</b>	Liquid
<b>Conjugate</b>	Non-conjugated
<b>Storage Buffer</b>	Preservative: 0.03% Proclin 300 Constituents: 50% Glycerol, 0.01M PBS, PH 7.4
<b>Purification Method</b>	>95%, Protein G purified
<b>Isotype</b>	IgG
<b>Clonality</b>	Polyclonal
<b>Alias</b>	Protein FAM3C (Interleukin-like EMT inducer), FAM3C, ILEI
<b>Immunogen Species</b>	Homo sapiens (Human)
<b>Research Area</b>	Cell Biology
<b>Target Names</b>	FAM3C

## Image



Western blot  
 All lanes: FAM3C antibody at 4µg/ml + A431 whole cell lysate  
 Secondary  
 Goat polyclonal to rabbit IgG at 1/10000 dilution  
 Predicted band size: 25 kDa  
 Observed band size: 25 kDa

**Usage** For Research Use Only. Not for use in diagnostic or therapeutic procedures.