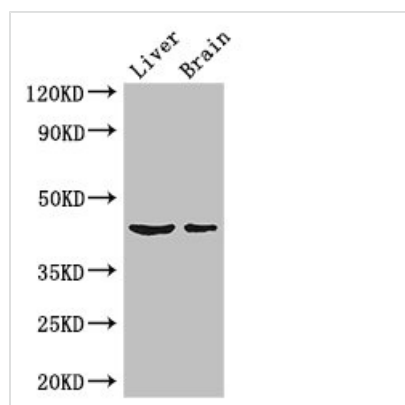




METTL2A Antibody

Product Code	CSB-PA856955LA01HU
Storage	Upon receipt, store at -20°C or -80°C. Avoid repeated freeze.
Uniprot No.	Q96IZ6
Immunogen	Recombinant Human Methyltransferase-like protein 2A protein (1-242AA)
Raised In	Rabbit
Species Reactivity	Human, Mouse
Tested Applications	ELISA, WB; Recommended dilution: WB:1:2000-1:5000
Form	Liquid
Conjugate	Non-conjugated
Storage Buffer	Preservative: 0.03% Proclin 300 Constituents: 50% Glycerol, 0.01M PBS, PH 7.4
Purification Method	>95%, Protein G purified
Isotype	IgG
Clonality	Polyclonal
Alias	Methyltransferase-like protein 2A (EC 2.1.1.-), METTL2A, METTL2
Immunogen Species	Homo sapiens (Human)
Research Area	Others
Target Names	METTL2A

Image



Western Blot

Positive WB detected in: Mouse liver tissue,
Mouse brain tissue

All lanes: METTL2A antibody at 3μg/ml

Secondary

Goat polyclonal to rabbit IgG at 1/50000 dilution

Predicted band size: 44, 28 kDa

Observed band size: 44 kDa