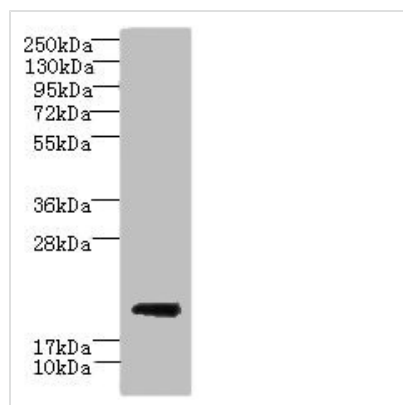




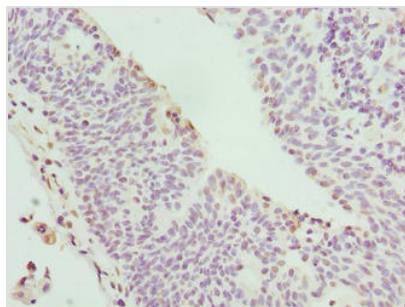
CYBC1 Antibody

Product Code	CSB-PA859832LA01HU
Storage	Upon receipt, store at -20°C or -80°C. Avoid repeated freeze.
Uniprot No.	Q9BQA9
Immunogen	Recombinant Human Cytochrome b-245 chaperone 1 protein (43-187AA)
Raised In	Rabbit
Species Reactivity	Human, Mouse
Tested Applications	ELISA, WB, IHC, IF; Recommended dilution: WB:1:500-1:2000, IHC:1:20-1:200, IF:1:50-1:200
Form	Liquid
Conjugate	Non-conjugated
Storage Buffer	Preservative: 0.03% Proclin 300 Constituents: 50% Glycerol, 0.01M PBS, PH 7.4
Purification Method	Antigen Affinity Purified
Isotype	IgG
Clonality	Polyclonal
Alias	Cytochrome b-245 chaperone 1, Essential for reactive oxygen species protein, Eros, CYBC1, C17orf62, EROS
Immunogen Species	Homo sapiens (Human)
Research Area	Others
Target Names	CYBC1

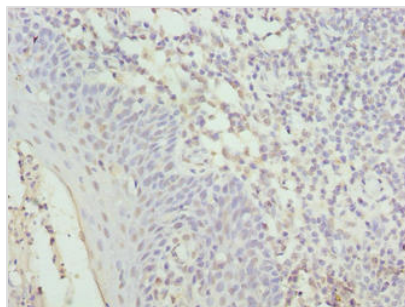
Image



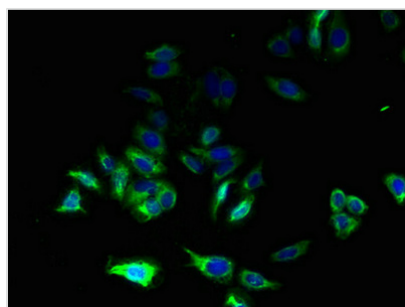
Western blot
All lanes: CYBC1 antibody at 1.5µg/ml + Mouse liver tissue
Secondary
Goat polyclonal to rabbit IgG at 1/10000 dilution
Predicted band size: 21, 20 kDa
Observed band size: 21 kDa



Immunohistochemistry of paraffin-embedded human bladder cancer using CSB-PA859832LA01HU at dilution of 1:100



Immunohistochemistry of paraffin-embedded human tonsil tissue using CSB-PA859832LA01HU at dilution of 1:100



Immunofluorescent analysis of HepG2 cells using CSB-PA859832LA01HU at dilution of 1:100 and Alexa Fluor 488-conjugated AffiniPure Goat Anti-Rabbit IgG(H+L)