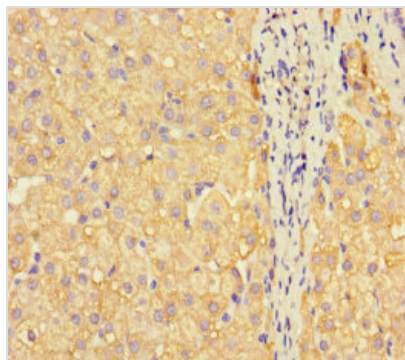




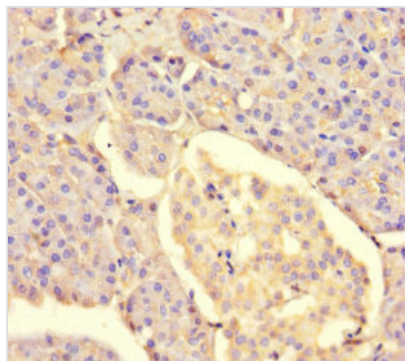
METTL7A Antibody

Product Code	CSB-PA862041LA01HU
Storage	Upon receipt, store at -20°C or -80°C. Avoid repeated freeze.
Uniprot No.	Q9H8H3
Immunogen	Recombinant Human Methyltransferase-like protein 7A protein (30-244AA)
Raised In	Rabbit
Species Reactivity	Human
Tested Applications	ELISA, IHC; Recommended dilution: IHC:1:20-1:200
Form	Liquid
Conjugate	Non-conjugated
Storage Buffer	Preservative: 0.03% Proclin 300 Constituents: 50% Glycerol, 0.01M PBS, PH 7.4
Purification Method	>95%, Protein G purified
Isotype	IgG
Clonality	Polyclonal
Alias	Methyltransferase-like protein 7A (EC 2.1.1.-) (Protein AAM-B), METTL7A
Immunogen Species	Homo sapiens (Human)
Research Area	Epigenetics and Nuclear Signaling
Target Names	METTL7A

Image



Immunohistochemistry of paraffin-embedded human liver cancer using CSB-PA862041LA01HU at dilution of 1:100



Immunohistochemistry of paraffin-embedded human pancreatic tissue using CSB-PA862041LA01HU at dilution of 1:100