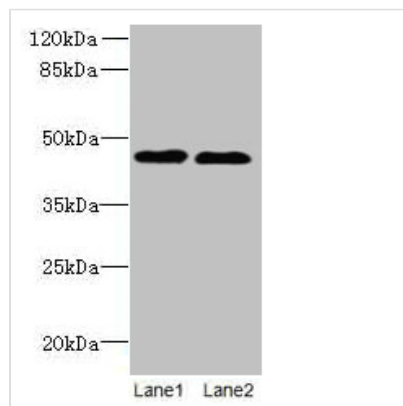




KCNK13 Antibody

Product Code	CSB-PA862058LA01HU
Storage	Upon receipt, store at -20°C or -80°C. Avoid repeated freeze.
Uniprot No.	Q9HB14
Immunogen	Recombinant Human Potassium channel subfamily K member 13 protein (292-408AA)
Raised In	Rabbit
Species Reactivity	Human
Tested Applications	ELISA, WB, IHC, IF; Recommended dilution: WB:1:500-1:2000, IHC:1:20-1:200, IF:1:50-1:200
Form	Liquid
Conjugate	Non-conjugated
Storage Buffer	Preservative: 0.03% Proclin 300 Constituents: 50% Glycerol, 0.01M PBS, PH 7.4
Purification Method	>95%, Protein G purified
Isotype	IgG
Clonality	Polyclonal
Alias	Potassium channel subfamily K member 13 (Tandem pore domain halothane-inhibited potassium channel 1) (THIK-1), KCNK13
Immunogen Species	Homo sapiens (Human)
Research Area	Neuroscience
Target Names	KCNK13

Image



Western blot

All lanes: KCNK13 antibody at 8µg/ml

Lane 1: HepG2 whole cell lysate

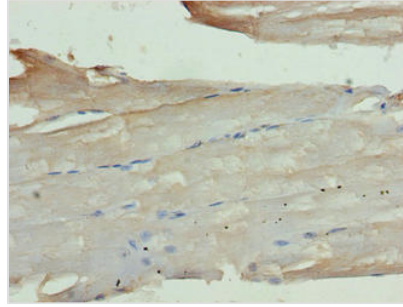
Lane 2: LO2 whole cell lysate

Secondary

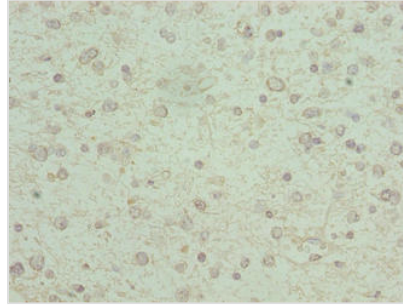
Goat polyclonal to rabbit IgG at 1/10000 dilution

Predicted band size: 46 kDa

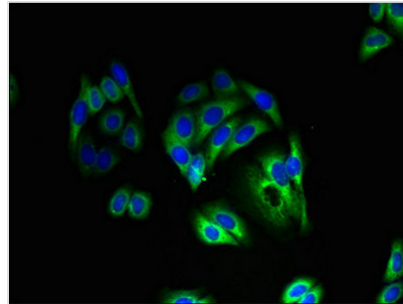
Observed band size: 46 kDa



Immunohistochemistry of paraffin-embedded human skeletal muscle tissue using CSB-PA862058LA01HU at dilution of 1:100



Immunohistochemistry of paraffin-embedded human glioma using CSB-PA862058LA01HU at dilution of 1:100



Immunofluorescent analysis of HepG2 cells using CSB-PA862058LA01HU at dilution of 1:100 and Alexa Fluor 488-conjugated AffiniPure Goat Anti-Rabbit IgG(H+L)

Usage

For Research Use Only. Not for use in diagnostic or therapeutic procedures.