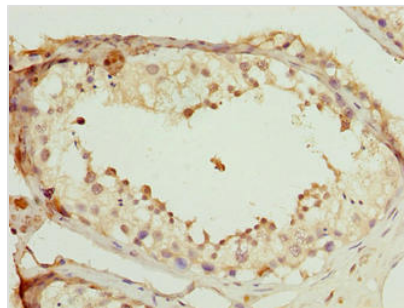




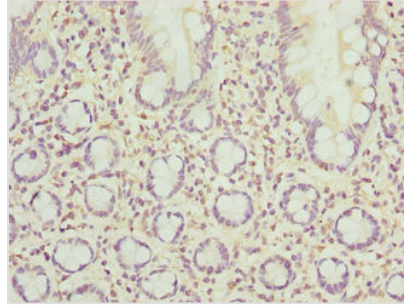
SCAPER Antibody

Product Code	CSB-PA863150LA01HU
Storage	Upon receipt, store at -20°C or -80°C. Avoid repeated freeze.
Uniprot No.	Q9BY12
Immunogen	Recombinant Human S phase cyclin A-associated protein in the endoplasmic reticulum protein (1109-1400AA)
Raised In	Rabbit
Species Reactivity	Human
Tested Applications	ELISA, IHC; Recommended dilution: IHC:1:20-1:200
Form	Liquid
Conjugate	Non-conjugated
Storage Buffer	Preservative: 0.03% Proclin 300 Constituents: 50% Glycerol, 0.01M PBS, PH 7.4
Purification Method	>95%, Protein G purified
Isotype	IgG
Clonality	Polyclonal
Alias	S phase cyclin A-associated protein in the endoplasmic reticulum (S phase cyclin A-associated protein in the ER) (Zinc finger protein 291), SCAPER, KIAA1454 ZNF291
Immunogen Species	Homo sapiens (Human)
Research Area	Others
Target Names	SCAPER

Image



Immunohistochemistry of paraffin-embedded human testis tissue using CSB-PA863150LA01HU at dilution of 1:100



Immunohistochemistry of paraffin-embedded human small intestine tissue using CSB-PA863150LA01HU at dilution of 1:100

Usage

For Research Use Only. Not for use in diagnostic or therapeutic procedures.