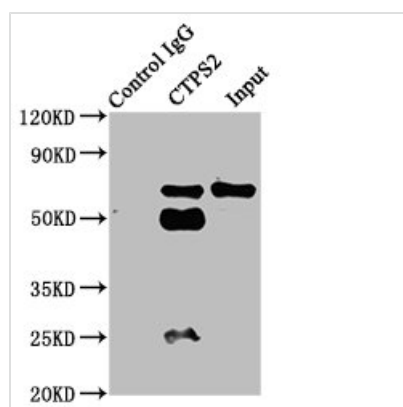




CTPS2 Antibody

Product Code	CSB-PA865117EA01HU
Storage	Upon receipt, store at -20°C or -80°C. Avoid repeated freeze.
Uniprot No.	Q9NRF8
Immunogen	Recombinant Human CTP synthase 2 protein (62-315AA)
Raised In	Rabbit
Species Reactivity	Human
Tested Applications	ELISA, WB, IHC, IP; Recommended dilution: WB:1:500-1:5000, IHC:1:20-1:200, IP:1:200-1:2000
Form	Liquid
Conjugate	Non-conjugated
Storage Buffer	Preservative: 0.03% Proclin 300 Constituents: 50% Glycerol, 0.01M PBS, PH 7.4
Purification Method	>95%, Protein G purified
Isotype	IgG
Clonality	Polyclonal
Alias	CTP synthase 2 (EC 6.3.4.2) (CTP synthetase 2) (UTP--ammonia ligase 2), CTPS2
Immunogen Species	Homo sapiens (Human)
Research Area	Signal Transduction
Target Names	CTPS2

Image

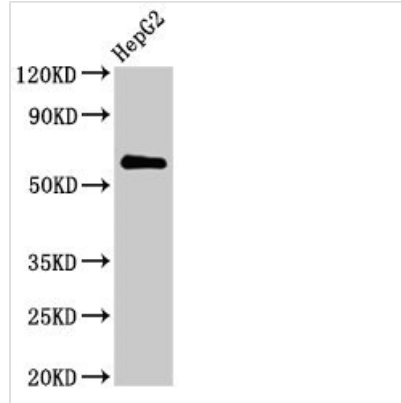


Immunoprecipitating CTPS2 in HepG2 whole cell lysate

Lane 1: Rabbit control IgG instead of CSB-PA865117EA01HU in HepG2 whole cell lysate. For western blotting, a HRP-conjugated Protein G antibody was used as the secondary antibody (1/2000)

Lane 2: CSB-PA865117EA01HU (6µg) + HepG2 whole cell lysate (500µg)

Lane 3: HepG2 whole cell lysate (20µg)

**Western Blot**

Positive WB detected in: HepG2 whole cell lysate

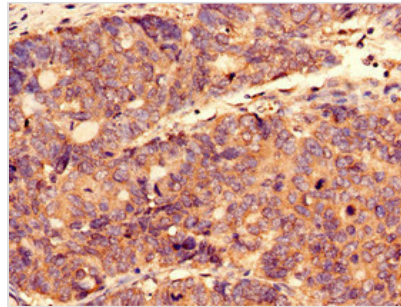
All lanes: CTPS2 antibody at 2.8µg/ml

Secondary

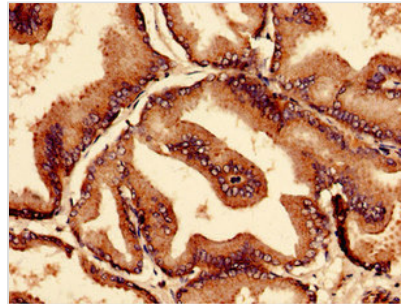
Goat polyclonal to rabbit IgG at 1/50000 dilution

Predicted band size: 66 kDa

Observed band size: 66 kDa



Immunocytochemistry analysis of human gastric cancer using CSB-PA865117EA01HU at dilution of 1:100



Immunocytochemistry analysis of human prostate tissue using CSB-PA865117EA01HU at dilution of 1:100

Usage

For Research Use Only. Not for use in diagnostic or therapeutic procedures.