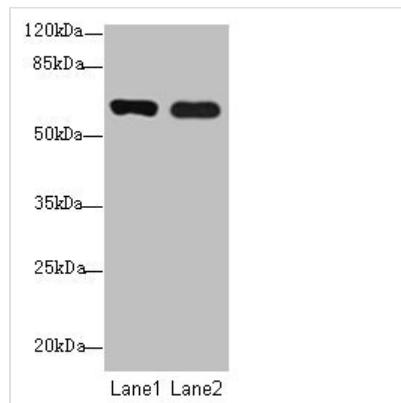




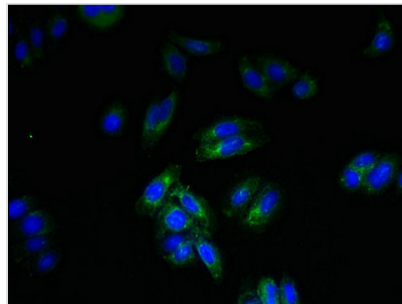
SPTLC3 Antibody

Product Code	CSB-PA865142LA01HU
Storage	Upon receipt, store at -20°C or -80°C. Avoid repeated freeze.
Uniprot No.	Q9NUV7
Immunogen	Recombinant Human Serine palmitoyltransferase 3 protein (1-58AA)
Raised In	Rabbit
Species Reactivity	Human, Mouse
Tested Applications	ELISA, WB, IHC, IF; Recommended dilution: WB:1:500-1:5000, IHC:1:20-1:200, IF:1:50-1:200
Form	Liquid
Conjugate	Non-conjugated
Storage Buffer	Preservative: 0.03% Proclin 300 Constituents: 50% Glycerol, 0.01M PBS, PH 7.4
Purification Method	Antigen Affinity Purified
Isotype	IgG
Clonality	Polyclonal
Alias	Serine palmitoyltransferase 3 (EC 2.3.1.50) (Long chain base biosynthesis protein 2b) (LCB2b) (Long chain base biosynthesis protein 3) (LCB 3) (Serine-palmitoyl-CoA transferase 3) (SPT 3), SPTLC3, C20orf38 SPTLC2L
Immunogen Species	Homo sapiens (Human)
Research Area	Others
Target Names	SPTLC3

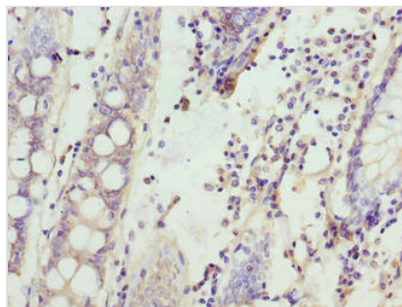
Image



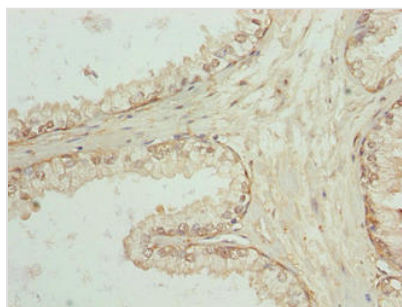
Western blot
All lanes: SPTLC3 antibody at 0.2µg/ml
Lane 1: Mouse kidney tissue
Lane 2: U87 whole cell lysate
Secondary
Goat polyclonal to rabbit IgG at 1/10000 dilution
Predicted band size: 63, 20 kDa
Observed band size: 63 kDa



Immunofluorescent analysis of HepG2 cells using CSB-PA865142LA01HU at dilution of 1:100 and Alexa Fluor 488-conjugated AffiniPure Goat Anti-Rabbit IgG(H+L)



Immunohistochemistry of paraffin-embedded human colon cancer using CSB-PA865142LA01HU at dilution of 1:100



Immunohistochemistry of paraffin-embedded human prostate cancer using CSB-PA865142LA01HU at dilution of 1:100