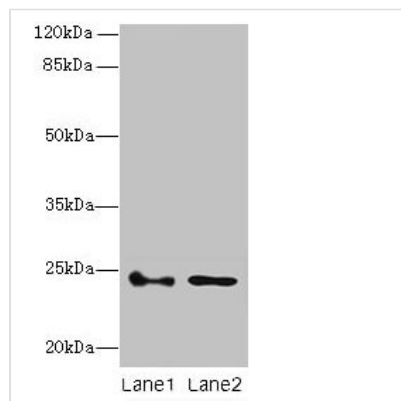




RHOF Antibody

Product Code	CSB-PA867192LA01HU
Storage	Upon receipt, store at -20°C or -80°C. Avoid repeated freeze.
Uniprot No.	Q9HBH0
Immunogen	Recombinant Human Rho-related GTP-binding protein RhoF protein (1-170AA)
Raised In	Rabbit
Species Reactivity	Human, Mouse
Tested Applications	ELISA, WB, IHC; Recommended dilution: WB:1:1000-1:5000, IHC:1:20-1:200
Form	Liquid
Conjugate	Non-conjugated
Storage Buffer	Preservative: 0.03% Proclin 300 Constituents: 50% Glycerol, 0.01M PBS, PH 7.4
Purification Method	>95%, Protein G purified
Isotype	IgG
Clonality	Polyclonal
Alias	Rho-related GTP-binding protein RhoF (Rho family GTPase Rif) (Rho in filopodia), RHOF, ARHF RIF
Immunogen Species	Homo sapiens (Human)
Research Area	Signal Transduction
Target Names	RHOF

Image



Western blot

All lanes: RHOF antibody at 3µg/ml

Lane 1: Colo320 whole cell lysate

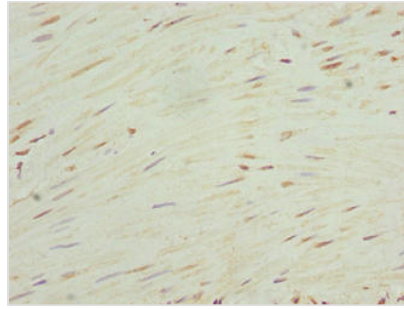
Lane 2: RAW264.7 whole cell lysate

Secondary

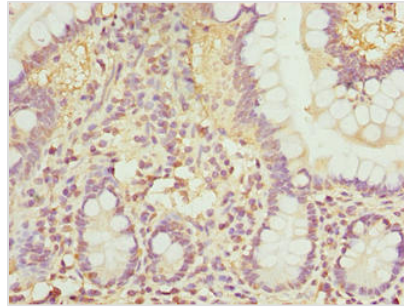
Goat polyclonal to rabbit IgG at 1/10000 dilution

Predicted band size: 24, 19 kDa

Observed band size: 24 kDa



Immunohistochemistry of paraffin-embedded human colon cancer using CSB-PA867192LA01HU at dilution of 1:100



Immunohistochemistry of paraffin-embedded human small intestine tissue using CSB-PA867192LA01HU at dilution of 1:100

Usage

For Research Use Only. Not for use in diagnostic or therapeutic procedures.