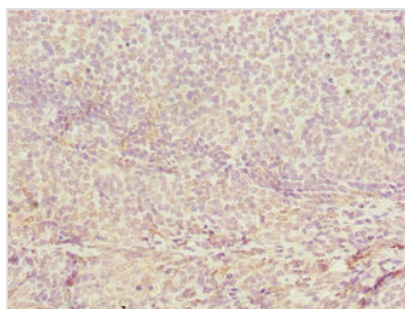




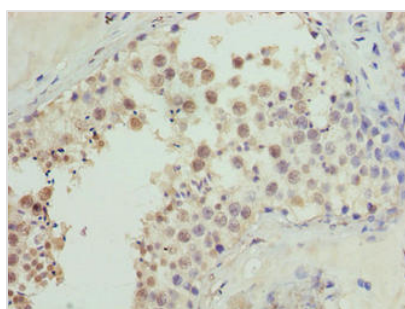
# CDADC1 Antibody

|                            |                                                                                                       |
|----------------------------|-------------------------------------------------------------------------------------------------------|
| <b>Product Code</b>        | CSB-PA874826LA01HU                                                                                    |
| <b>Storage</b>             | Upon receipt, store at -20°C or -80°C. Avoid repeated freeze.                                         |
| <b>Uniprot No.</b>         | Q9BWV3                                                                                                |
| <b>Immunogen</b>           | Recombinant Human Cytidine and dCMP deaminase domain-containing protein 1 protein (1-99AA)            |
| <b>Raised In</b>           | Rabbit                                                                                                |
| <b>Species Reactivity</b>  | Human                                                                                                 |
| <b>Tested Applications</b> | ELISA, IHC; Recommended dilution: IHC:1:20-1:200                                                      |
| <b>Form</b>                | Liquid                                                                                                |
| <b>Conjugate</b>           | Non-conjugated                                                                                        |
| <b>Storage Buffer</b>      | Preservative: 0.03% Proclin 300<br>Constituents: 50% Glycerol, 0.01M PBS, PH 7.4                      |
| <b>Purification Method</b> | >95%, Protein G purified                                                                              |
| <b>Isotype</b>             | IgG                                                                                                   |
| <b>Clonality</b>           | Polyclonal                                                                                            |
| <b>Alias</b>               | Cytidine and dCMP deaminase domain-containing protein 1 (Testis development protein NYD-SP15), CDADC1 |
| <b>Immunogen Species</b>   | Homo sapiens (Human)                                                                                  |
| <b>Research Area</b>       | Signal Transduction                                                                                   |
| <b>Target Names</b>        | CDADC1                                                                                                |

## Image



Immunohistochemistry of paraffin-embedded human tonsil tissue using CSB-PA874826LA01HU at dilution of 1:100



Immunohistochemistry of paraffin-embedded human testis tissue using CSB-PA874826LA01HU at dilution of 1:100



---

**Usage**

For Research Use Only. Not for use in diagnostic or therapeutic procedures.