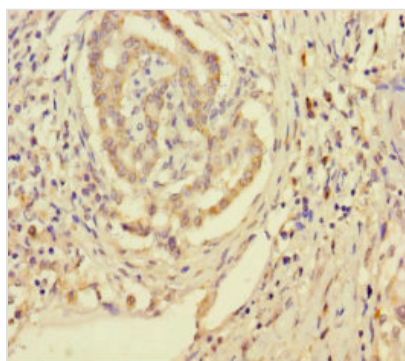




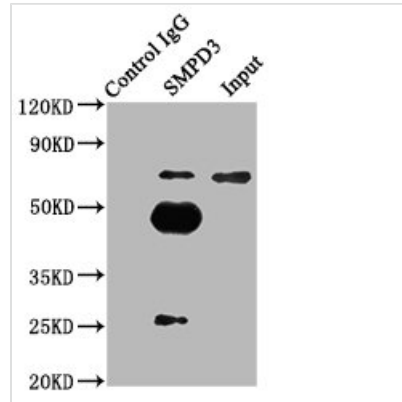
SMPD3 Antibody

Product Code	CSB-PA878920LA01HU
Storage	Upon receipt, store at -20°C or -80°C. Avoid repeated freeze.
Uniprot No.	Q9NY59
Immunogen	Recombinant Human Sphingomyelin phosphodiesterase 3 protein (401-655AA)
Raised In	Rabbit
Species Reactivity	Human, Mouse
Tested Applications	ELISA, WB, IHC, IP; Recommended dilution: WB:1:500-1:2000 IHC:1:50-1:200, IP:1:200-1:2000
Form	Liquid
Conjugate	Non-conjugated
Storage Buffer	Preservative: 0.03% Proclin 300 Constituents: 50% Glycerol, 0.01M PBS, PH 7.4
Purification Method	>95%, Protein G purified
Isotype	IgG
Clonality	Polyclonal
Product Type	Polyclonal Antibody
Immunogen Species	Homo sapiens (Human)
Research Area	Neuroscience
Target Names	SMPD3

Image



Immunohistochemistry of paraffin-embedded human pancreatic cancer using CSB-PA878920LA01HU at dilution of 1:100



Immunoprecipitating SMPD3 in mouse brain whole cell lysate

Lane 1: Rabbit control IgG (1 μ g) instead of CSB-PA878920LA01HU in mouse brain whole cell lysate. For western blotting, a HRP-conjugated Protein G antibody was used as the secondary antibody (1/2000)

Lane 2: CSB-PA878920LA01HU (6 μ g) + Mouse brain whole cell lysate (500 μ g)

Lane 3: Mouse brain whole cell lysate (10 μ g)

Usage

For Research Use Only. Not for use in diagnostic or therapeutic procedures.