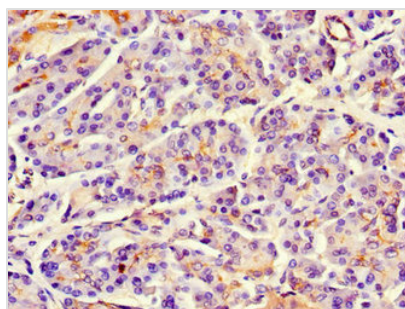




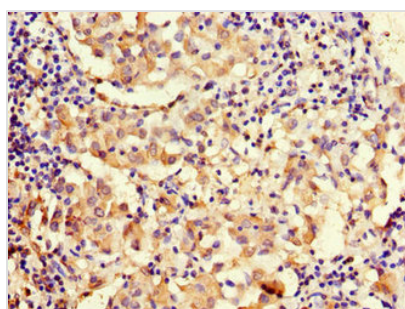
MAP10 Antibody

Product Code	CSB-PA879069LA01HU
Storage	Upon receipt, store at -20°C or -80°C. Avoid repeated freeze.
Uniprot No.	Q9P2G4
Immunogen	Recombinant Human Microtubule-associated protein 10 protein (401-600AA)
Raised In	Rabbit
Species Reactivity	Human, Mouse
Tested Applications	ELISA, WB, IHC, IF; Recommended dilution: WB:1:2000-1:5000, IHC:1:20-1:200, IF:1:50-1:200
Form	Liquid
Conjugate	Non-conjugated
Storage Buffer	Preservative: 0.03% Proclin 300 Constituents: 50% Glycerol, 0.01M PBS, PH 7.4
Purification Method	>95%, Protein G purified
Isotype	IgG
Clonality	Polyclonal
Alias	Microtubule-associated protein 10 (Microtubule regulator of 120 KDa), MAP10, KIAA1383 MTR120
Immunogen Species	Homo sapiens (Human)
Research Area	Signal Transduction
Target Names	MAP10

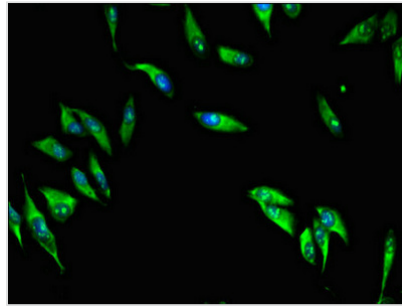
Image



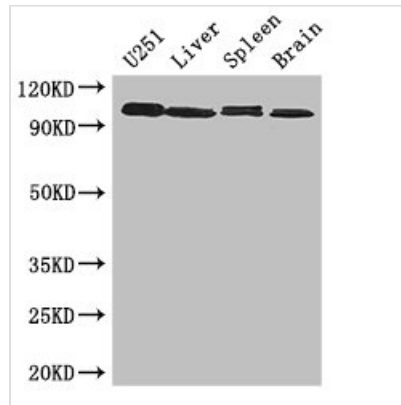
Immunohistochemistry of paraffin-embedded human pancreatic tissue using CSB-PA879069LA01HU at dilution of 1:100



Immunohistochemistry of paraffin-embedded human lung cancer using CSB-PA879069LA01HU at dilution of 1:100



Immunofluorescent analysis of HeLa cells using CSB-PA879069LA01HU at dilution of 1:100 and Alexa Fluor 488-conjugated AffiniPure Goat Anti-Rabbit IgG(H+L)

**Western Blot**

Positive WB detected in: U251 whole cell lysate, Mouse liver tissue, Mouse Spleen tissue, Mouse brain tissue

All lanes: MAP10 antibody at 3µg/ml

Secondary

Goat polyclonal to rabbit IgG at 1/50000 dilution

Predicted band size: 101 kDa

Observed band size: 101 kDa

Usage

For Research Use Only. Not for use in diagnostic or therapeutic procedures.