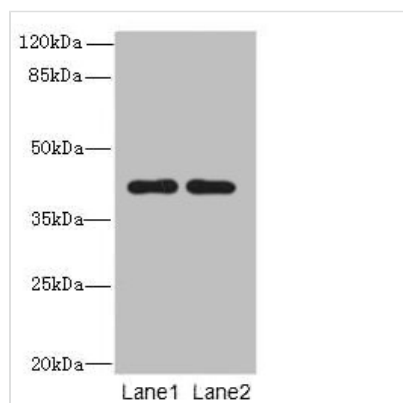




CIPC Antibody

Product Code	CSB-PA880155LA01HU
Storage	Upon receipt, store at -20°C or -80°C. Avoid repeated freeze.
Uniprot No.	Q9C0C6
Immunogen	Recombinant Human CLOCK-interacting pacemaker protein (1-399AA)
Raised In	Rabbit
Species Reactivity	Human, Mouse
Tested Applications	ELISA, WB, IHC; Recommended dilution: WB:1:1000-1:5000, IHC:1:20-1:200
Form	Liquid
Conjugate	Non-conjugated
Storage Buffer	Preservative: 0.03% Proclin 300 Constituents: 50% Glycerol, 0.01M PBS, PH 7.4
Purification Method	>95%, Protein G purified
Isotype	IgG
Clonality	Polyclonal
Alias	CLOCK-interacting pacemaker (CLOCK-interacting circadian protein), CIPC, KIAA1737
Immunogen Species	Homo sapiens (Human)
Research Area	Others
Target Names	CIPC

Image



Western blot

All lanes: CIPC antibody at 6μg/ml

Lane 1: A431 whole cell lysate

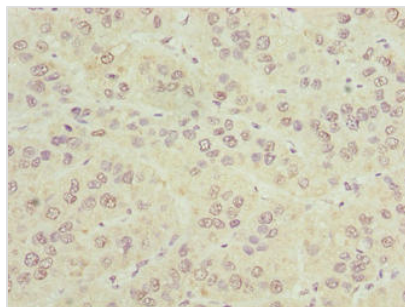
Lane 2: NIH/3T3 whole cell lysate

Secondary

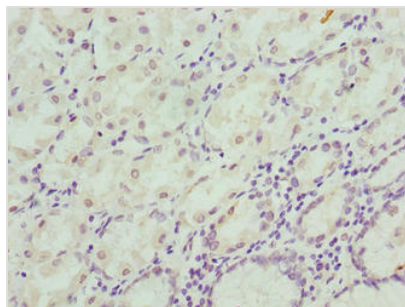
Goat polyclonal to rabbit IgG at 1/10000 dilution

Predicted band size: 43 kDa

Observed band size: 43 kDa



Immunohistochemistry of paraffin-embedded human liver cancer using CSB-PA880155LA01HU at dilution of 1:100



Immunohistochemistry of paraffin-embedded human stomach tissue using CSB-PA880155LA01HU at dilution of 1:100