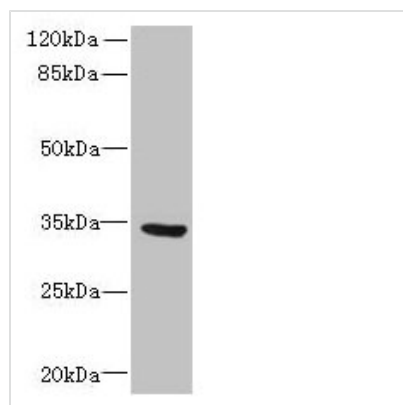




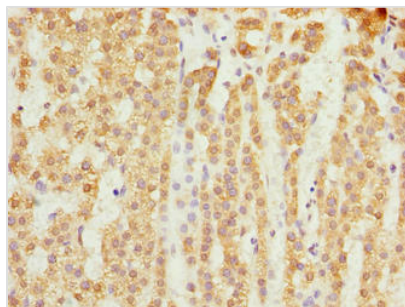
SLC25A18 Antibody

Product Code	CSB-PA880945LA01HU
Storage	Upon receipt, store at -20°C or -80°C. Avoid repeated freeze.
Uniprot No.	Q9H1K4
Immunogen	Recombinant Human Mitochondrial glutamate carrier 2 protein (246-287AA)
Raised In	Rabbit
Species Reactivity	Human
Tested Applications	ELISA, WB, IHC, IF; Recommended dilution: WB:1:500-1:2000, IHC:1:20-1:200, IF:1:50-1:200
Form	Liquid
Conjugate	Non-conjugated
Storage Buffer	Preservative: 0.03% Proclin 300 Constituents: 50% Glycerol, 0.01M PBS, PH 7.4
Purification Method	>95%, Protein G purified
Isotype	IgG
Clonality	Polyclonal
Alias	Mitochondrial glutamate carrier 2 (GC-2) (Glutamate/H(+) symporter 2) (Solute carrier family 25 member 18), SLC25A18, GC2
Immunogen Species	Homo sapiens (Human)
Research Area	Others
Target Names	SLC25A18

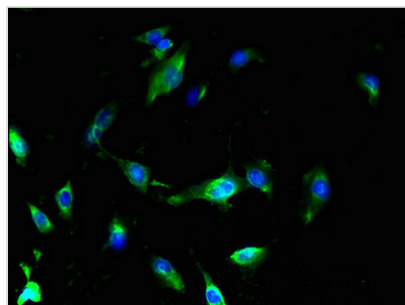
Image



Western blot
All lanes: SLC25A18 antibody at 0.3μg/ml + U87 whole cell lysate
Secondary
Goat polyclonal to rabbit IgG at 1/10000 dilution
Predicted band size: 34 kDa
Observed band size: 34 kDa



Immunohistochemistry of paraffin-embedded human adrenal gland tissue using CSB-PA880945LA01HU at dilution of 1:100



Immunofluorescent analysis of U251 cells using CSB-PA880945LA01HU at dilution of 1:100 and Alexa Fluor 488-conjugated AffiniPure Goat Anti-Rabbit IgG(H+L)