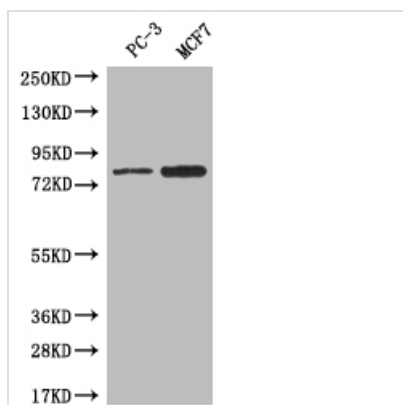




LRRN3 Antibody

Product Code	CSB-PA880968LA01HU
Storage	Upon receipt, store at -20°C or -80°C. Avoid repeated freeze.
Uniprot No.	Q9H3W5
Immunogen	Recombinant Human Leucine-rich repeat neuronal protein 3 protein (201-500AA)
Raised In	Rabbit
Species Reactivity	Human
Tested Applications	ELISA, WB, IHC, IF; Recommended dilution: WB:1:500-1:2000, IHC:1:20-1:200, IF:1:50-1:200
Form	Liquid
Conjugate	Non-conjugated
Storage Buffer	Preservative: 0.03% Proclin 300 Constituents: 50% Glycerol, 0.01M PBS, PH 7.4
Purification Method	>95%, Protein G purified
Isotype	IgG
Clonality	Polyclonal
Product Type	Polyclonal Antibody
Immunogen Species	Homo sapiens (Human)
Research Area	Signal Transduction
Target Names	LRRN3

Image



Western Blot

Positive WB detected in: PC-3 whole cell lysate, MCF7 whole cell lysate

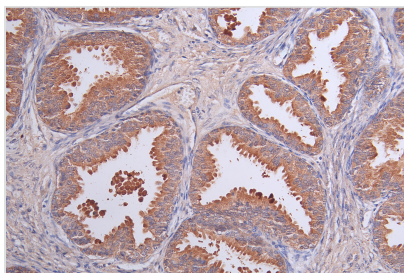
All lanes: LRRN3 antibody at 1:500

Secondary

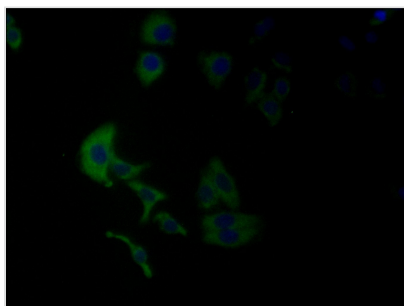
Goat polyclonal to rabbit IgG at 1/50000 dilution

Predicted band size: 80 kDa

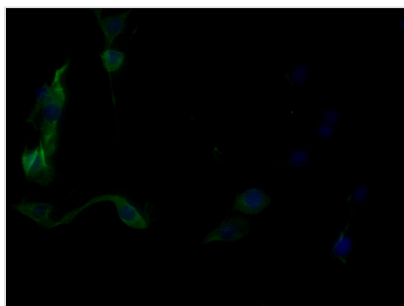
Observed band size: 80 kDa



Immunohistochemistry of paraffin-embedded human prostate tissue using CSB-PA880968LA01HU at dilution of 1:50



Immunofluorescence staining of HepG2 cell with CSB-PA880968LA01HU at 1:25, counter-stained with DAPI. The cells were fixed in 4% formaldehyde and blocked in 10% normal Goat Serum. The cells were then incubated with the antibody overnight at 4°C. The secondary antibody was Alexa Fluor 488-conjugated AffiniPure Goat Anti-Rabbit IgG(H+L).



Immunofluorescence staining of MCF-7 cell with CSB-PA880968LA01HU at 1:25, counter-stained with DAPI. The cells were fixed in 4% formaldehyde and blocked in 10% normal Goat Serum. The cells were then incubated with the antibody overnight at 4°C. The secondary antibody was Alexa Fluor 488-conjugated AffiniPure Goat Anti-Rabbit IgG(H+L).

Usage

For Research Use Only. Not for use in diagnostic or therapeutic procedures.