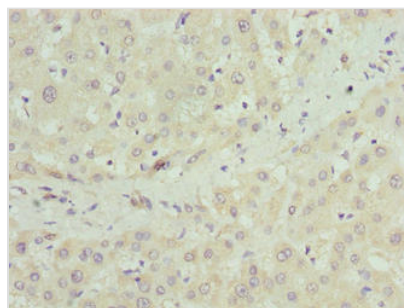




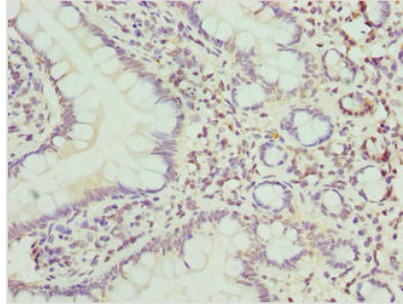
CRISPLD1 Antibody

Product Code	CSB-PA884457LA01HU
Storage	Upon receipt, store at -20°C or -80°C. Avoid repeated freeze.
Uniprot No.	Q9H336
Immunogen	Recombinant Human Cysteine-rich secretory protein LCCL domain-containing 1 protein (24-300AA)
Raised In	Rabbit
Species Reactivity	Human
Tested Applications	ELISA, IHC; Recommended dilution: IHC:1:20-1:200
Form	Liquid
Conjugate	Non-conjugated
Storage Buffer	Preservative: 0.03% Proclin 300 Constituents: 50% Glycerol, 0.01M PBS, PH 7.4
Purification Method	>95%, Protein G purified
Isotype	IgG
Clonality	Polyclonal
Alias	Cysteine-rich secretory protein LCCL domain-containing 1 (CocoaCrisp) (Cysteine-rich secretory protein 10) (CRISP-10) (LCCL domain-containing cysteine-rich secretory protein 1) (Trypsin inhibitor HI), CRISPLD1, CRISP10 LCRISP1
Immunogen Species	Homo sapiens (Human)
Research Area	Signal Transduction
Target Names	CRISPLD1

Image



Immunohistochemistry of paraffin-embedded human liver tissue using CSB-PA884457LA01HU at dilution of 1:100



Immunohistochemistry of paraffin-embedded human small intestine tissue using CSB-PA884457LA01HU at dilution of 1:100

Usage

For Research Use Only. Not for use in diagnostic or therapeutic procedures.