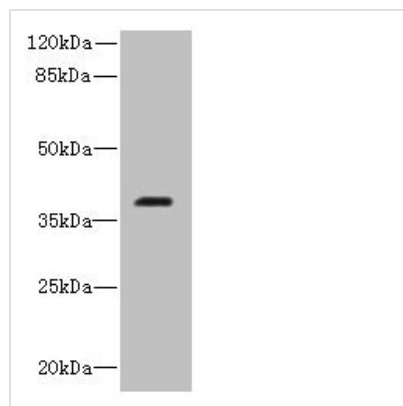




RIBC2 Antibody

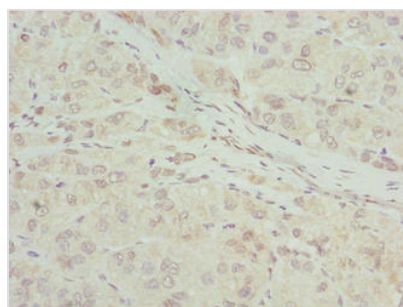
Product Code	CSB-PA884469LA01HU
Storage	Upon receipt, store at -20°C or -80°C. Avoid repeated freeze.
Uniprot No.	Q9H4K1
Immunogen	Recombinant Human RIB43A-like with coiled-coils protein 2 protein (1-309AA)
Raised In	Rabbit
Species Reactivity	Human
Tested Applications	ELISA, WB, IHC; Recommended dilution: WB:1:1000-1:5000, IHC:1:20-1:200
Form	Liquid
Conjugate	Non-conjugated
Storage Buffer	Preservative: 0.03% Proclin 300 Constituents: 50% Glycerol, 0.01M PBS, PH 7.4
Purification Method	Antigen Affinity Purified
Isotype	IgG
Clonality	Polyclonal
Alias	RIB43A-like with coiled-coils protein 2, RIBC2, C22orf11
Immunogen Species	Homo sapiens (Human)
Research Area	Cell Biology
Target Names	RIBC2

Image

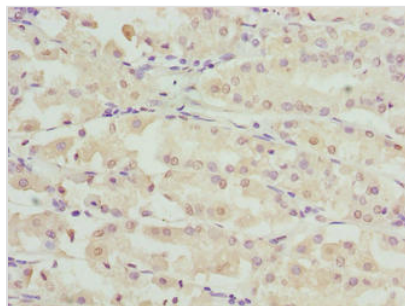


Western blot

All lanes: RIBC2 antibody at 0.8µg/ml + Caco-2 whole cell lysate
Secondary
Goat polyclonal to rabbit IgG at 1/10000 dilution
Predicted band size: 38 kDa
Observed band size: 38 kDa



Immunohistochemistry of paraffin-embedded human liver cancer using CSB-PA884469LA01HU at dilution of 1:100



Immunohistochemistry of paraffin-embedded human gastric cancer using CSB-PA884469LA01HU at dilution of 1:100

Usage

For Research Use Only. Not for use in diagnostic or therapeutic procedures.