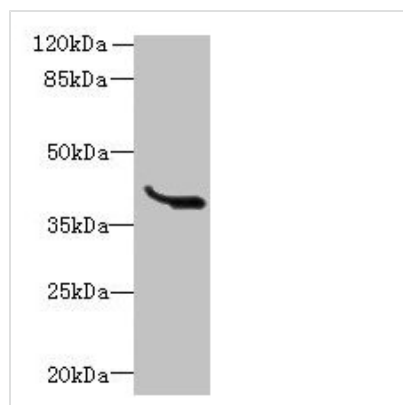




# LRTM1 Antibody

<b>Product Code</b>	CSB-PA884513LA01HU
<b>Storage</b>	Upon receipt, store at -20°C or -80°C. Avoid repeated freeze.
<b>Uniprot No.</b>	Q9HBL6
<b>Immunogen</b>	Recombinant Human Leucine-rich repeat and transmembrane domain-containing protein 1 protein (1-212AA)
<b>Raised In</b>	Rabbit
<b>Species Reactivity</b>	Human
<b>Tested Applications</b>	ELISA, WB, IHC, IF; Recommended dilution: WB:1:1000-1:5000, IHC:1:20-1:200, IF:1:10-1:100
<b>Form</b>	Liquid
<b>Conjugate</b>	Non-conjugated
<b>Storage Buffer</b>	Preservative: 0.03% Proclin 300 Constituents: 50% Glycerol, 0.01M PBS, PH 7.4
<b>Purification Method</b>	Antigen Affinity Purified
<b>Isotype</b>	IgG
<b>Clonality</b>	Polyclonal
<b>Alias</b>	Leucine-rich repeat and transmembrane domain-containing protein 1, LRTM1
<b>Immunogen Species</b>	Homo sapiens (Human)
<b>Research Area</b>	Cell Biology
<b>Target Names</b>	LRTM1

## Image



Western blot

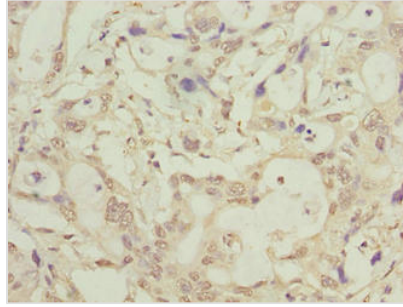
All lanes: LRTM1 antibody at 0.4µg/ml + K562 whole cell lysate

Secondary

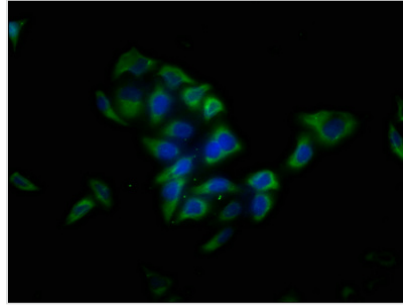
Goat polyclonal to rabbit IgG at 1/10000 dilution

Predicted band size: 39, 30 kDa

Observed band size: 39 kDa



Immunohistochemistry of paraffin-embedded human pancreatic cancer using CSB-PA884513LA01HU at dilution of 1:100



Immunofluorescence staining of HeLa cells with CSB-PA884513LA01HU at 1:13, counter-stained with DAPI. The cells were fixed in 4% formaldehyde, permeabilized using 0.2% Triton X-100 and blocked in 10% normal Goat Serum. The cells were then incubated with the antibody overnight at 4°C. The secondary antibody was Alexa Fluor 488-conjugated AffiniPure Goat Anti-Rabbit IgG(H+L).

## Usage

For Research Use Only. Not for use in diagnostic or therapeutic procedures.