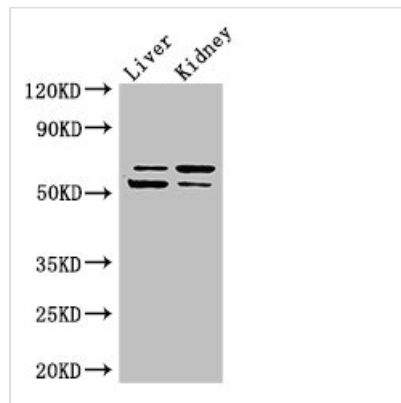




LMBRD1 Antibody

Product Code	CSB-PA885730LA01HU
Storage	Upon receipt, store at -20°C or -80°C. Avoid repeated freeze.
Uniprot No.	Q9NUN5
Immunogen	Recombinant Human Probable lysosomal cobalamin transporter protein (6-100AA)
Raised In	Rabbit
Species Reactivity	Human, Mouse
Tested Applications	ELISA, WB, IHC; Recommended dilution: WB:1:500-1:5000, IHC:1:20-1:200
Form	Liquid
Conjugate	Non-conjugated
Storage Buffer	Preservative: 0.03% Proclin 300 Constituents: 50% Glycerol, 0.01M PBS, PH 7.4
Purification Method	>95%, Protein G purified
Isotype	IgG
Clonality	Polyclonal
Alias	Probable lysosomal cobalamin transporter (HDAg-L-interacting protein NESI) (LMBR1 domain-containing protein 1) (Nuclear export signal-interacting protein), LMBRD1, C6orf209 NESI
Immunogen Species	Homo sapiens (Human)
Research Area	Tags & Cell Markers
Target Names	LMBRD1

Image



Western Blot

Positive WB detected in: Mouse liver tissue,
Mouse kidney tissue

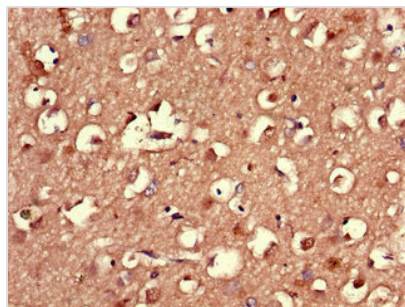
All lanes: LMBRD1 antibody at 4µg/ml

Secondary

Goat polyclonal to rabbit IgG at 1/50000 dilution

Predicted band size: 62, 45, 54, 22 kDa

Observed band size: 62, 54 kDa



Immunohistochemistry of paraffin-embedded human brain tissue using CSB-PA885730LA01HU at dilution of 1:100

Usage

For Research Use Only. Not for use in diagnostic or therapeutic procedures.