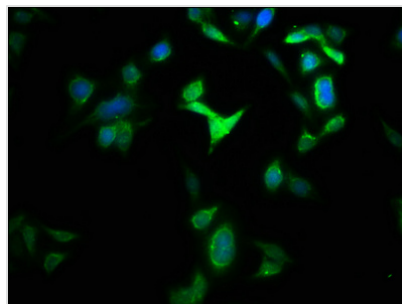




GLS2 Antibody

Product Code	CSB-PA887058LA01HU
Storage	Upon receipt, store at -20°C or -80°C. Avoid repeated freeze.
Uniprot No.	Q9UI32
Immunogen	Recombinant Human Glutaminase liver isoform, mitochondrial protein (15-602AA)
Raised In	Rabbit
Species Reactivity	Human
Tested Applications	ELISA, IF; Recommended dilution: IF:1:50-1:200
Form	Liquid
Conjugate	Non-conjugated
Storage Buffer	Preservative: 0.03% Proclin 300 Constituents: 50% Glycerol, 0.01M PBS, PH 7.4
Purification Method	>95%, Protein G purified
Isotype	IgG
Clonality	Polyclonal
Alias	Glutaminase liver isoform, mitochondrial (GLS) (EC 3.5.1.2) (L-glutaminase) (L-glutamine amidohydrolase), GLS2, GA
Immunogen Species	Homo sapiens (Human)
Research Area	Tags & Cell Markers
Target Names	GLS2

Image



Immunofluorescence staining of HepG2 cells with CSB-PA887058LA01HU at 1:133, counter-stained with DAPI. The cells were fixed in 4% formaldehyde, permeabilized using 0.2% Triton X-100 and blocked in 10% normal Goat Serum. The cells were then incubated with the antibody overnight at 4°C. The secondary antibody was Alexa Fluor 488-conjugated AffiniPure Goat Anti-Rabbit IgG(H+L).