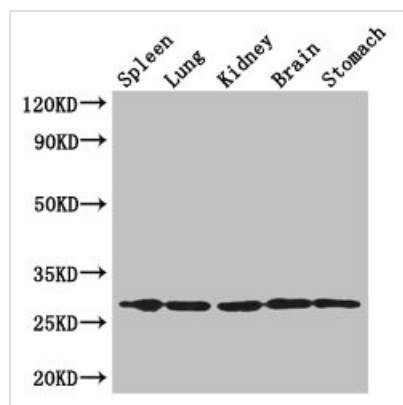




RTP3 Antibody

Product Code	CSB-PA887106LA01HU
Storage	Upon receipt, store at -20°C or -80°C. Avoid repeated freeze.
Uniprot No.	Q9BQQ7
Immunogen	Recombinant Human Receptor-transporting protein 3 protein (1-211AA)
Raised In	Rabbit
Species Reactivity	Human, Mouse
Tested Applications	ELISA, WB, IHC, IP; Recommended dilution: WB:1:2000-1:8000, IHC:1:20-1:200, IP:1:200-1:2000
Form	Liquid
Conjugate	Non-conjugated
Storage Buffer	Preservative: 0.03% Proclin 300 Constituents: 50% Glycerol, 0.01M PBS, PH 7.4
Purification Method	>95%, Protein G purified
Isotype	IgG
Clonality	Polyclonal
Alias	Receptor-transporting protein 3 (3CxxC-type zinc finger protein 3) (Transmembrane protein 7), RTP3, TMEM7 Z3CXXC3
Immunogen Species	Homo sapiens (Human)
Research Area	Others
Target Names	RTP3

Image



Western Blot

Positive WB detected in: Mouse spleen tissue, , Mouse lung tissue, Mouse kidney tissue, Mouse brain tissue, Mouse stomach tissue

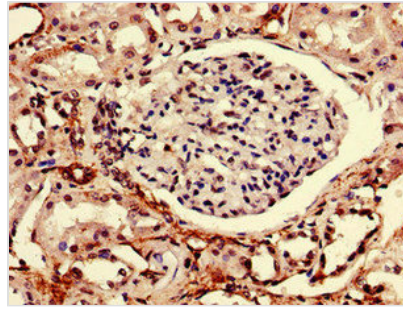
All lanes: RTP3 antibody at 3μg/ml

Secondary

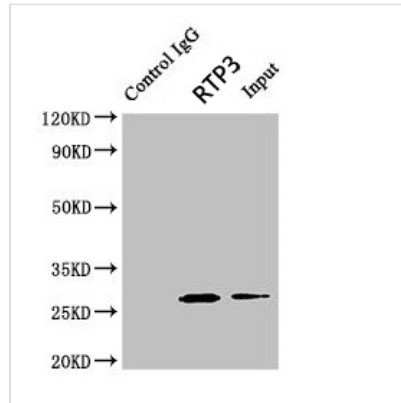
Goat polyclonal to rabbit IgG at 1/50000 dilution

Predicted band size: 28 kDa

Observed band size: 28 kDa



Immunohistochemistry of paraffin-embedded human kidney tissue using CSB-PA887106LA01HU at dilution of 1:100



Immunoprecipitating RTP3 in Mouse brain tissue
Lane 1: Rabbit control IgG (1 μ g) instead of CSB-PA887106LA01HU in Mouse brain tissue. For western blotting, a HRP-conjugated light chain specific antibody was used as the secondary antibody (1/50000)
Lane 2: CSB-PA887106LA01HU (8 μ g) + Mouse brain tissue (500 μ g)
Lane 3: Mouse brain tissue (10 μ g)

Usage

For Research Use Only. Not for use in diagnostic or therapeutic procedures.