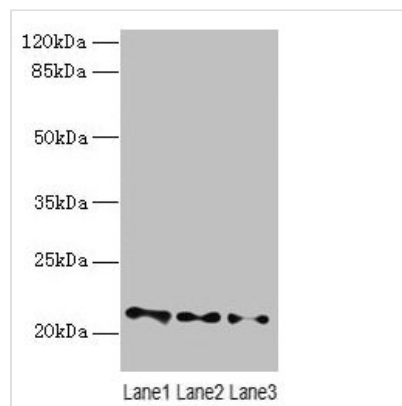




VPS25 Antibody

Product Code	CSB-PA887108LA01HU
Storage	Upon receipt, store at -20°C or -80°C. Avoid repeated freeze.
Uniprot No.	Q9BRG1
Immunogen	Recombinant Human Vacuolar protein-sorting-associated protein 25 protein (1-176AA)
Raised In	Rabbit
Species Reactivity	Human, Mouse
Tested Applications	ELISA, WB, IHC, IF; Recommended dilution: WB:1:1000-1:5000, IHC:1:20-1:200, IF:1:50-1:200
Form	Liquid
Conjugate	Non-conjugated
Storage Buffer	Preservative: 0.03% Proclin 300 Constituents: 50% Glycerol, 0.01M PBS, PH 7.4
Purification Method	>95%, Protein G purified
Isotype	IgG
Clonality	Polyclonal
Alias	Vacuolar protein-sorting-associated protein 25 (hVps25) (Dermal papilla-derived protein 9) (ELL-associated protein of 20 kDa) (ESCRT-II complex subunit VPS25), VPS25, DERP9 EAP20
Immunogen Species	Homo sapiens (Human)
Research Area	Signal Transduction
Target Names	VPS25

Image



Western blot

All lanes: VPS25 antibody at 3µg/ml

Lane 1: Mouse kidney tissue

Lane 2: HL60 whole cell lysate

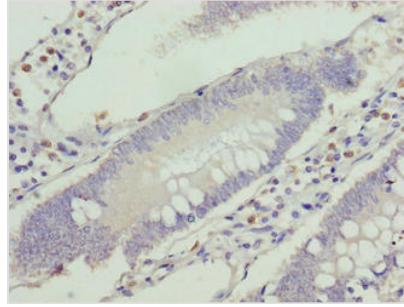
Lane 3: THP-1 whole cell lysate

Secondary

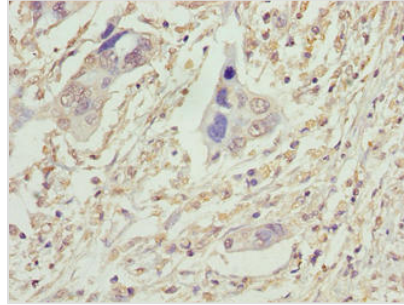
Goat polyclonal to rabbit IgG at 1/10000 dilution

Predicted band size: 21 kDa

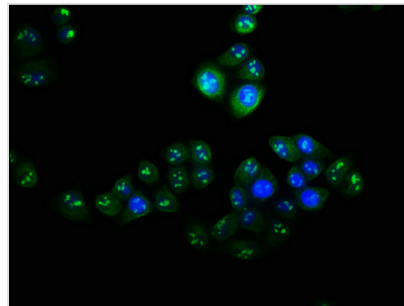
Observed band size: 21 kDa



Immunohistochemistry of paraffin-embedded human colon cancer using CSB-PA887108LA01HU at dilution of 1:100



Immunohistochemistry of paraffin-embedded human pancreatic cancer using CSB-PA887108LA01HU at dilution of 1:100



Immunofluorescence staining of HeLa cells with CSB-PA887108LA01HU at 1:100, counter-stained with DAPI. The cells were fixed in 4% formaldehyde, permeabilized using 0.2% Triton X-100 and blocked in 10% normal Goat Serum. The cells were then incubated with the antibody overnight at 4°C. The secondary antibody was Alexa Fluor 488-conjugated AffiniPure Goat Anti-Rabbit IgG(H+L).

Usage

For Research Use Only. Not for use in diagnostic or therapeutic procedures.