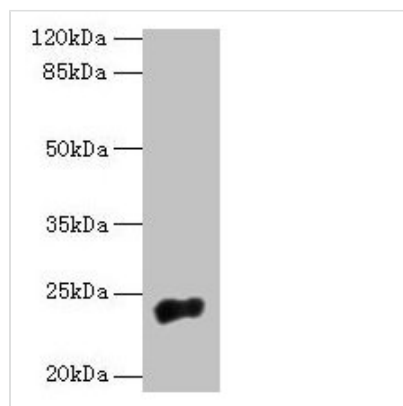




NACA2 Antibody

| | |
|----------------------------|---|
| Product Code | CSB-PA887940LA01HU |
| Storage | Upon receipt, store at -20°C or -80°C. Avoid repeated freeze. |
| Uniprot No. | Q9H009 |
| Immunogen | Recombinant Human Nascent polypeptide-associated complex subunit alpha-2 protein (1-215AA) |
| Raised In | Rabbit |
| Species Reactivity | Human |
| Tested Applications | ELISA, WB; Recommended dilution: WB:1:1000-1:5000 |
| Form | Liquid |
| Conjugate | Non-conjugated |
| Storage Buffer | Preservative: 0.03% Proclin 300 Constituents: 50% Glycerol, 0.01M PBS, PH 7.4 |
| Purification Method | >95%, Protein G purified |
| Isotype | IgG |
| Clonality | Polyclonal |
| Alias | Nascent polypeptide-associated complex subunit alpha-2 (Alpha-NAC-like) (Hom s 2.01) (Nascent polypeptide-associated complex subunit alpha-like) (NAC-alpha-like), NACA2, NACAL |
| Immunogen Species | Homo sapiens (Human) |
| Research Area | Epigenetics and Nuclear Signaling |
| Target Names | NACA2 |

Image



Western blot
All lanes: NACA2 antibody at 5µg/ml + 293T whole cell lysate
Secondary
Goat polyclonal to rabbit IgG at 1/10000 dilution
Predicted band size: 24 kDa
Observed band size: 24 kDa