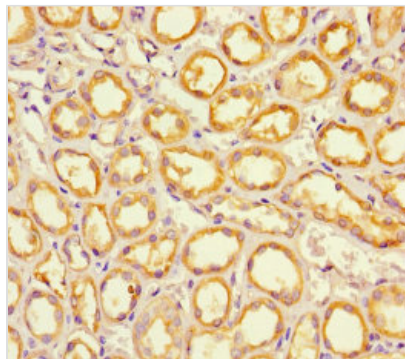




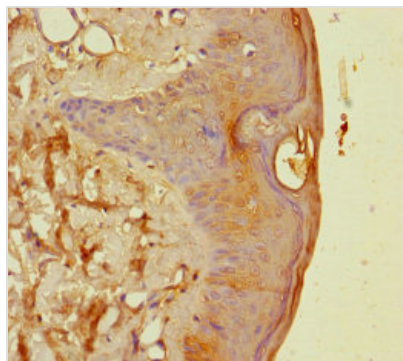
EPS8L2 Antibody

Product Code	CSB-PA887991LA01HU
Storage	Upon receipt, store at -20°C or -80°C. Avoid repeated freeze.
Uniprot No.	Q9H6S3
Immunogen	Recombinant Human Epidermal growth factor receptor kinase substrate 8-like protein 2 protein (201-500AA)
Raised In	Rabbit
Species Reactivity	Human
Tested Applications	ELISA, IHC; Recommended dilution: IHC:1:20-1:200
Form	Liquid
Conjugate	Non-conjugated
Storage Buffer	Preservative: 0.03% Proclin 300 Constituents: 50% Glycerol, 0.01M PBS, PH 7.4
Purification Method	>95%, Protein G purified
Isotype	IgG
Clonality	Polyclonal
Alias	Epidermal growth factor receptor kinase substrate 8-like protein 2 (EPS8-like protein 2) (Epidermal growth factor receptor pathway substrate 8-related protein 2) (EPS8-related protein 2), EPS8L2, EPS8R2
Immunogen Species	Homo sapiens (Human)
Research Area	Signal Transduction
Target Names	EPS8L2

Image



Immunohistochemistry of paraffin-embedded human kidney tissue using CSB-PA887991LA01HU at dilution of 1:100



Immunohistochemistry of paraffin-embedded human skin tissue using CSB-PA887991LA01HU at dilution of 1:100