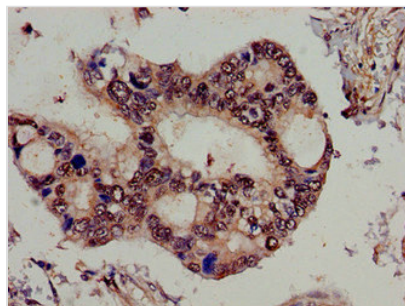




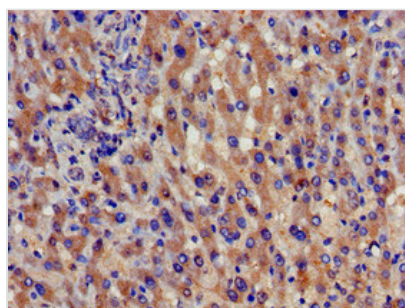
SPG21 Antibody

Product Code	CSB-PA889158LA01HU
Storage	Upon receipt, store at -20°C or -80°C. Avoid repeated freeze.
Uniprot No.	Q9NZD8
Immunogen	Recombinant Human Maspardin protein (1-308AA)
Raised In	Rabbit
Species Reactivity	Human
Tested Applications	ELISA, IHC, IF; Recommended dilution: IHC:1:20-1:200, IF:1:50-1:200
Form	Liquid
Conjugate	Non-conjugated
Storage Buffer	Preservative: 0.03% Proclin 300 Constituents: 50% Glycerol, 0.01M PBS, PH 7.4
Purification Method	>95%, Protein G purified
Isotype	IgG
Clonality	Polyclonal
Alias	Maspardin (Acid cluster protein 33) (Spastic paraplegia 21 autosomal recessive Mast syndrome protein) (Spastic paraplegia 21 protein), SPG21, ACP33
Immunogen Species	Homo sapiens (Human)
Research Area	Immunology
Target Names	SPG21

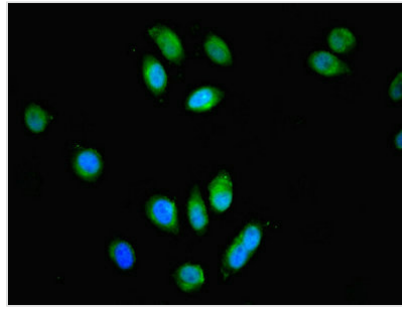
Image



Immunohistochemistry of paraffin-embedded human pancreatic cancer using CSB-PA889158LA01HU at dilution of 1:100



Immunohistochemistry of paraffin-embedded human liver cancer using CSB-PA889158LA01HU at dilution of 1:100



Immunofluorescent analysis of A549 cells using CSB-PA889158LA01HU at dilution of 1:100 and Alexa Fluor 488-conjugated AffiniPure Goat Anti-Rabbit IgG(H+L)

Usage

For Research Use Only. Not for use in diagnostic or therapeutic procedures.