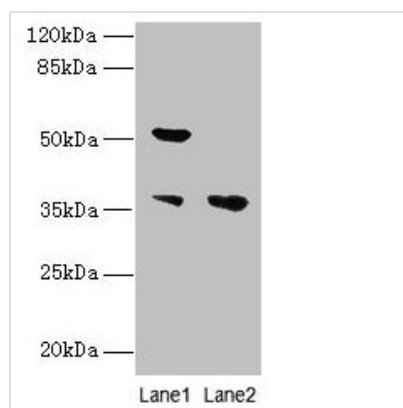




IMPACT Antibody

Product Code	CSB-PA889191LA01HU
Storage	Upon receipt, store at -20°C or -80°C. Avoid repeated freeze.
Uniprot No.	Q9P2X3
Immunogen	Recombinant Human Protein IMPACT protein (41-320AA)
Raised In	Rabbit
Species Reactivity	Human
Tested Applications	ELISA, WB, IHC; Recommended dilution: WB:1:1000-1:5000, IHC:1:20-1:200
Form	Liquid
Conjugate	Non-conjugated
Storage Buffer	Preservative: 0.03% Proclin 300 Constituents: 50% Glycerol, 0.01M PBS, PH 7.4
Purification Method	>95%, Protein G purified
Isotype	IgG
Clonality	Polyclonal
Alias	Protein IMPACT (Imprinted and ancient gene protein homolog), IMPACT
Immunogen Species	Homo sapiens (Human)
Research Area	Epigenetics and Nuclear Signaling
Target Names	IMPACT

Image



Western blot

All lanes: IMPACT antibody at 10µg/ml

Lane 1: Hela whole cell lysate

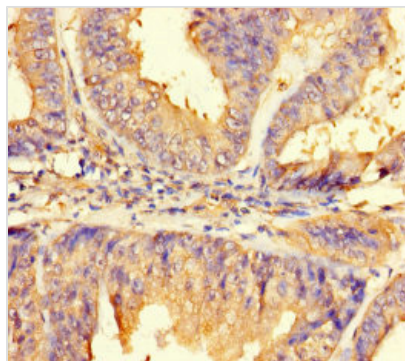
Lane 2: HL60 whole cell lysate

Secondary

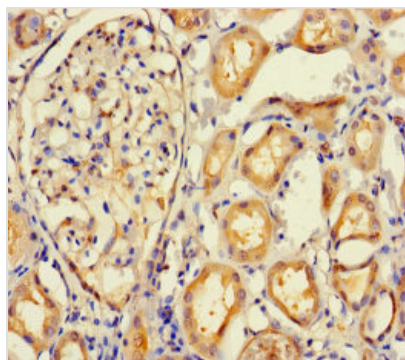
Goat polyclonal to rabbit IgG at 1/10000 dilution

Predicted band size: 37, 23 kDa

Observed band size: 37, 52 kDa



Immunohistochemistry of paraffin-embedded human endometrial cancer using CSB-PA889191LA01HU at dilution of 1:100



Immunohistochemistry of paraffin-embedded human kidney tissue using CSB-PA889191LA01HU at dilution of 1:100

Usage

For Research Use Only. Not for use in diagnostic or therapeutic procedures.