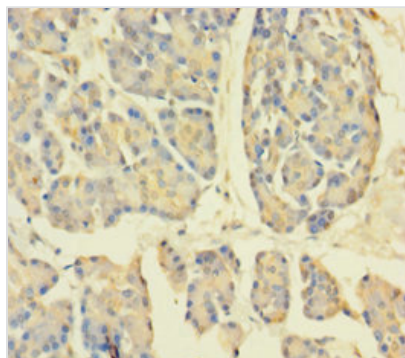




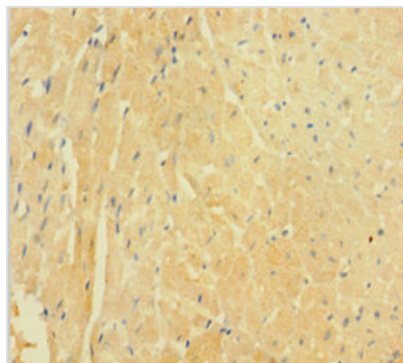
# APPL1 Antibody

|                            |   |
|----------------------------|---|
| <b>Product Code</b>        | CSB-PA890917LA01HU  |
| <b>Storage</b>             | Upon receipt, store at -20°C or -80°C. Avoid repeated freeze.   |
| <b>Uniprot No.</b>         | Q9UKG1  |
| <b>Immunogen</b>           | Recombinant Human DCC-interacting protein 13-alpha protein (214-495AA)  |
| <b>Raised In</b>           | Rabbit  |
| <b>Species Reactivity</b>  | Human   |
| <b>Tested Applications</b> | ELISA, IHC; Recommended dilution: IHC:1:20-1:200  |
| <b>Form</b>                | Liquid  |
| <b>Conjugate</b>           | Non-conjugated  |
| <b>Storage Buffer</b>      | Preservative: 0.03% Proclin 300<br>Constituents: 50% Glycerol, 0.01M PBS, PH 7.4  |
| <b>Purification Method</b> | >95%, Protein G purified  |
| <b>Isotype</b>             | IgG   |
| <b>Clonality</b>           | Polyclonal  |
| <b>Alias</b>               | DCC-interacting protein 13-alpha (Dip13-alpha) (Adapter protein containing PH domain, PTB domain and leucine zipper motif 1), APPL1, APPL DIP13A KIAA1428 |
| <b>Immunogen Species</b>   | Homo sapiens (Human)  |
| <b>Research Area</b>       | Cell Biology  |
| <b>Target Names</b>        | APPL1   |

## Image



Immunohistochemistry of paraffin-embedded human pancreatic tissue using CSB-PA890917LA01HU at dilution of 1:100



Immunohistochemistry of paraffin-embedded human heart tissue using CSB-PA890917LA01HU at dilution of 1:100