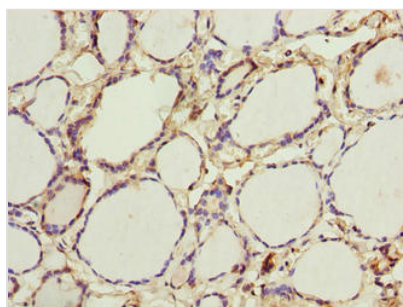




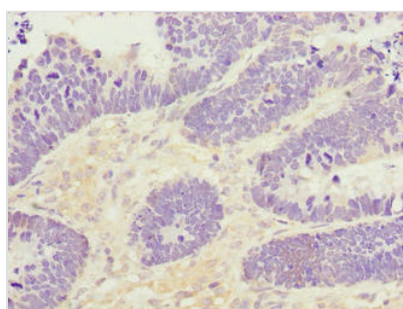
# PADI3 Antibody

|                            |  |
|----------------------------|--|
| <b>Product Code</b>        | CSB-PA891552LA01HU   |
| <b>Storage</b>             | Upon receipt, store at -20°C or -80°C. Avoid repeated freeze.  |
| <b>Uniprot No.</b>         | Q9ULW8   |
| <b>Immunogen</b>           | Recombinant Human Protein-arginine deiminase type-3 protein (1-664AA)  |
| <b>Raised In</b>           | Rabbit   |
| <b>Species Reactivity</b>  | Human  |
| <b>Tested Applications</b> | ELISA, IHC; Recommended dilution: IHC:1:20-1:200   |
| <b>Form</b>                | Liquid   |
| <b>Conjugate</b>           | Non-conjugated   |
| <b>Storage Buffer</b>      | Preservative: 0.03% Proclin 300<br>Constituents: 50% Glycerol, 0.01M PBS, PH 7.4   |
| <b>Purification Method</b> | >95%, Protein G purified   |
| <b>Isotype</b>             | IgG  |
| <b>Clonality</b>           | Polyclonal   |
| <b>Alias</b>               | Protein-arginine deiminase type-3 (EC 3.5.3.15) (Peptidylarginine deiminase III) (Protein-arginine deiminase type III), PADI3, PAD3 PDI3 |
| <b>Immunogen Species</b>   | Homo sapiens (Human)   |
| <b>Research Area</b>       | Signal Transduction  |
| <b>Target Names</b>        | PADI3  |

## Image



Immunohistochemistry of paraffin-embedded human thyroid tissue using CSB-PA891552LA01HU at dilution of 1:100



Immunohistochemistry of paraffin-embedded human ovarian cancer using CSB-PA891552LA01HU at dilution of 1:100



**Usage**

For Research Use Only. Not for use in diagnostic or therapeutic procedures.