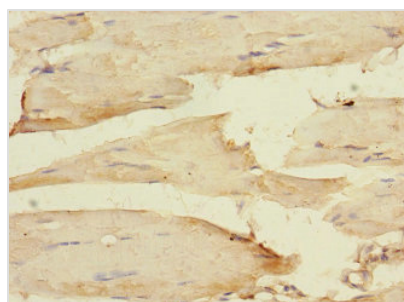




ITGB1BP2 Antibody

Product Code	CSB-PA892333LA01HU
Storage	Upon receipt, store at -20°C or -80°C. Avoid repeated freeze.
Uniprot No.	Q9UKP3
Immunogen	Recombinant Human Integrin beta-1-binding protein 2 protein (130-329AA)
Raised In	Rabbit
Species Reactivity	Human
Tested Applications	ELISA, IHC; Recommended dilution: IHC:1:20-1:200
Form	Liquid
Conjugate	Non-conjugated
Storage Buffer	Preservative: 0.03% Proclin 300 Constituents: 50% Glycerol, 0.01M PBS, PH 7.4
Purification Method	>95%, Protein G purified
Isotype	IgG
Clonality	Polyclonal
Alias	Integrin beta-1-binding protein 2 (Melusin), ITGB1BP2
Immunogen Species	Homo sapiens (Human)
Research Area	Signal Transduction
Target Names	ITGB1BP2

Image



Immunohistochemistry of paraffin-embedded human skeletal muscle tissue using CSB-PA892333LA01HU at dilution of 1:100

Usage

For Research Use Only. Not for use in diagnostic or therapeutic procedures.