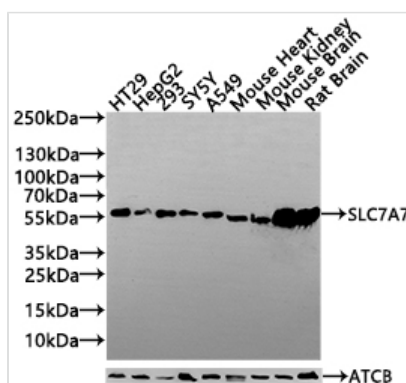




SLC7A7 Antibody

Product Code	CSB-PA892349LA01HU
Storage	Upon receipt, store at -20°C or -80°C. Avoid repeated freeze.
Uniprot No.	Q9UM01
Immunogen	Synthesized peptide derived from human YLAT1
Raised In	Rabbit
Species Reactivity	Human, Mouse, Rat
Tested Applications	ELISA, WB, IHC; Recommended dilution: WB:1:500-1:2000, IHC:1:100-1:300
Form	Liquid
Storage Buffer	Liquid in PBS containing 50% glycerol, 0.5% BSA and 0.02% sodium azide.
Purification Method	Antigen affinity purification
Isotype	IgG
Clonality	Polyclonal
Product Type	Polyclonal Antibody
Immunogen Species	Homo sapiens (Human)
Research Area	Signal Transduction
Target Names	SLC7A7

Image

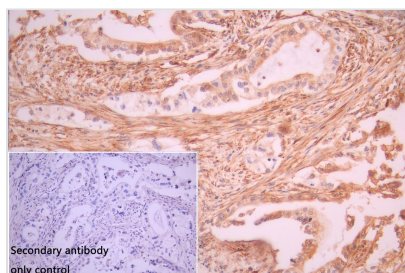


Western Blot

Positive WB detected in: HT29 whole cell lysate(30µg), HepG2 whole cell lysate(30µg), 293 whole cell lysate(30µg), SY5Y whole cell lysate(30µg), A549 whole cell lysate(30µg), Mouse Heart tissue lysate(30µg), Mouse Kidney tissue lysate(30µg), Mouse Brain tissue lysate(30µg), Rat Brain tissue lysate(30µg)
All lanes: SLC7A7 antibody at 1:1000

Secondary

Goat polyclonal to rabbit IgG at 1/20000 dilution
Predicted band size: 56 kDa
Observed band size: 56 kDa
Exposure time: 120s



IHC image of CSB-PA892349LA01HU diluted at 1:100 and staining in paraffin-embedded human pancreatic cancer performed on a Leica Bond™ system. After dewaxing and hydration, antigen retrieval was mediated by high pressure in a citrate buffer (pH 6.0). Section was blocked with 10% normal goat serum 30min at RT. Then primary antibody (1% BSA) was incubated at 4°C overnight. The primary is detected by a Goat anti-rabbit polymer IgG labeled by HRP and visualized using 0.05% DAB. Secondary



antibody only control: uses 1% BSA instead of primary antibody

Usage

For Research Use Only. Not for use in diagnostic or therapeutic procedures.