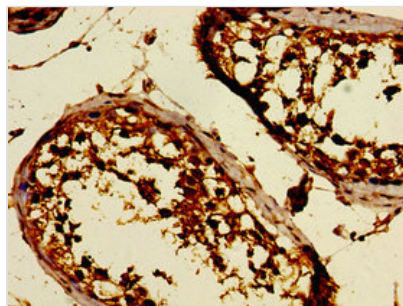




DKKL1 Antibody

Product Code	CSB-PA892450LA01HU
Storage	Upon receipt, store at -20°C or -80°C. Avoid repeated freeze.
Uniprot No.	Q9UK85
Immunogen	Recombinant Human Dickkopf-like protein 1 protein (31-242AA)
Raised In	Rabbit
Species Reactivity	Human
Tested Applications	ELISA, IHC; Recommended dilution: IHC:1:20-1:200
Form	Liquid
Conjugate	Non-conjugated
Storage Buffer	Preservative: 0.03% Proclin 300 Constituents: 50% Glycerol, 0.01M PBS, PH 7.4
Purification Method	>95%, Protein G purified
Isotype	IgG
Clonality	Polyclonal
Alias	Dickkopf-like protein 1 (Cancer/testis antigen 34) (CT34) (Protein soggy-1) (SGY-1), DKKL1, SGY1
Immunogen Species	Homo sapiens (Human)
Research Area	Stem Cells
Target Names	DKKL1

Image



Immunohistochemistry of paraffin-embedded human testis tissue using CSB-PA892450LA01HU at dilution of 1:100

Usage

For Research Use Only. Not for use in diagnostic or therapeutic procedures.