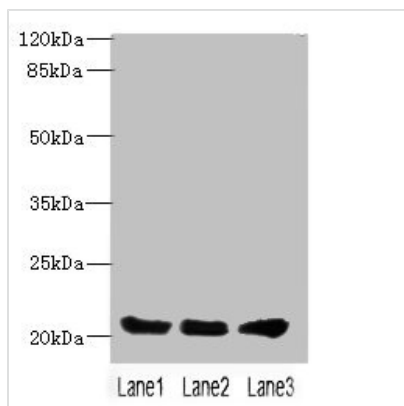




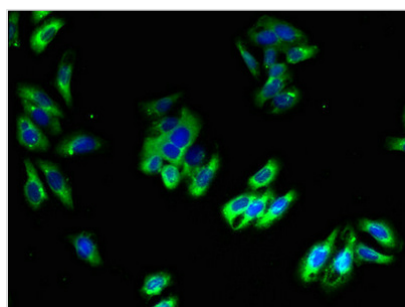
PLLP Antibody

Product Code	CSB-PA896501LA01HU
Storage	Upon receipt, store at -20°C or -80°C. Avoid repeated freeze.
Uniprot No.	Q9Y342
Immunogen	Recombinant Human Plasmolipin protein (1-35AA)
Raised In	Rabbit
Species Reactivity	Human, Mouse
Tested Applications	ELISA, WB, IF; Recommended dilution: WB:1:1000-1:5000, IF:1:50-1:200
Form	Liquid
Conjugate	Non-conjugated
Storage Buffer	Preservative: 0.03% Proclin 300 Constituents: 50% Glycerol, 0.01M PBS, PH 7.4
Purification Method	>95%, Protein G purified
Isotype	IgG
Clonality	Polyclonal
Alias	Plasmolipin (Plasma membrane proteolipid), PLLP, PMLP TM4SF11
Immunogen Species	Homo sapiens (Human)
Research Area	Neuroscience
Target Names	PLLP

Image



Western blot
 All lanes: PLLP antibody at 4µg/ml
 Lane 1: Mouse gonadal tissue
 Lane 2: Mouse kidney tissue
 Lane 3: Mouse lung tissue
 Secondary
 Goat polyclonal to rabbit IgG at 1/10000 dilution
 Predicted band size: 20 kDa
 Observed band size: 20 kDa



Immunofluorescent analysis of HepG2 cells using CSB-PA896501LA01HU at dilution of 1:100 and Alexa Fluor 488-conjugated AffiniPure Goat Anti-Rabbit IgG(H+L)



Usage

For Research Use Only. Not for use in diagnostic or therapeutic procedures.