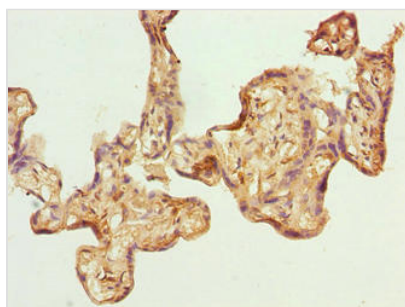




# GPSM3 Antibody

<b>Product Code</b>	CSB-PA896517LA01HU
<b>Storage</b>	Upon receipt, store at -20°C or -80°C. Avoid repeated freeze.
<b>Uniprot No.</b>	Q9Y4H4
<b>Immunogen</b>	Recombinant Human G-protein-signaling modulator 3 protein (1-160AA)
<b>Raised In</b>	Rabbit
<b>Species Reactivity</b>	Human
<b>Tested Applications</b>	ELISA, IHC; Recommended dilution: IHC:1:20-1:200
<b>Form</b>	Liquid
<b>Conjugate</b>	Non-conjugated
<b>Storage Buffer</b>	Preservative: 0.03% Proclin 300 Constituents: 50% Glycerol, 0.01M PBS, PH 7.4
<b>Purification Method</b>	>95%, Protein G purified
<b>Isotype</b>	IgG
<b>Clonality</b>	Polyclonal
<b>Alias</b>	G-protein-signaling modulator 3 (Activator of G-protein signaling 4) (G18.1b) (Protein G18), GPSM3, AGS4 C6orf9 G18
<b>Immunogen Species</b>	Homo sapiens (Human)
<b>Research Area</b>	Others
<b>Target Names</b>	GPSM3

## Image



Immunohistochemistry of paraffin-embedded human placenta tissue using CSB-PA896517LA01HU at dilution of 1:100

## Usage

For Research Use Only. Not for use in diagnostic or therapeutic procedures.