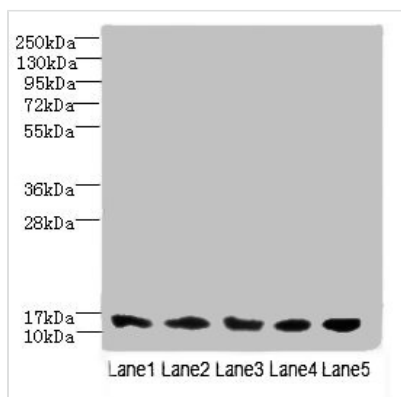




# TIMM10B Antibody

<b>Product Code</b>	CSB-PA896532LA01HU
<b>Storage</b>	Upon receipt, store at -20°C or -80°C. Avoid repeated freeze.
<b>Uniprot No.</b>	Q9Y5J6
<b>Immunogen</b>	Recombinant Human Mitochondrial import inner membrane translocase subunit Tim10 B protein (1-103AA)
<b>Raised In</b>	Rabbit
<b>Species Reactivity</b>	Human, Mouse
<b>Tested Applications</b>	ELISA, WB, IHC; Recommended dilution: WB:1:1000-1:5000, IHC:1:20-1:200
<b>Form</b>	Liquid
<b>Conjugate</b>	Non-conjugated
<b>Storage Buffer</b>	Preservative: 0.03% Proclin 300 Constituents: 50% Glycerol, 0.01M PBS, PH 7.4
<b>Purification Method</b>	>95%, Protein G purified
<b>Isotype</b>	IgG
<b>Clonality</b>	Polyclonal
<b>Alias</b>	Mitochondrial import inner membrane translocase subunit Tim10 B (Fracture callus protein 1) (FxC1) (Mitochondrial import inner membrane translocase subunit Tim9 B) (TIMM10B) (Tim10b), TIMM10B, FXC1 TIM9B TIMM9B
<b>Immunogen Species</b>	Homo sapiens (Human)
<b>Research Area</b>	Others
<b>Target Names</b>	TIMM10B

## Image



### Western blot

All lanes: TIMM10B antibody at 4µg/ml

Lane 1: HeLa whole cell lysate

Lane 2: 293T whole cell lysate

Lane 3: HepG2 whole cell lysate

Lane 4: K562 whole cell lysate

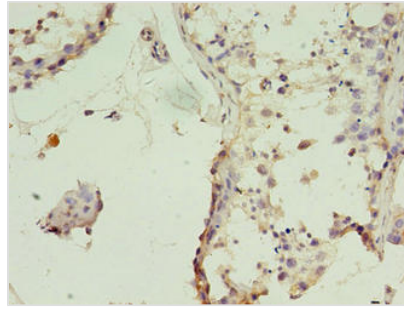
Lane 5: Mouse heart tissue

Secondary

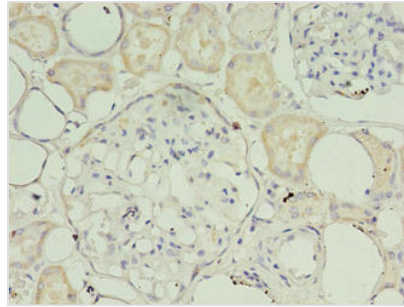
Goat polyclonal to rabbit IgG at 1/10000 dilution

Predicted band size: 12 kDa

Observed band size: 12 kDa



Immunohistochemistry of paraffin-embedded human testis tissue using CSB-PA896532LA01HU at dilution of 1:100



Immunohistochemistry of paraffin-embedded human kidney tissue using CSB-PA896532LA01HU at dilution of 1:100

## Usage

For Research Use Only. Not for use in diagnostic or therapeutic procedures.