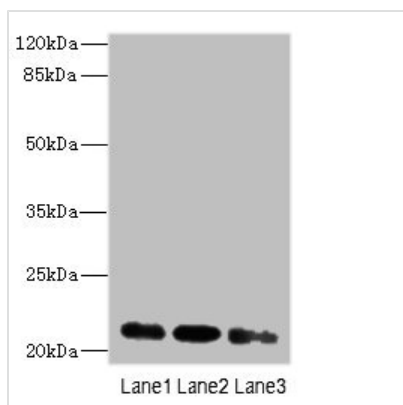




MRPL11 Antibody

Product Code	CSB-PA896709LA01HU
Storage	Upon receipt, store at -20°C or -80°C. Avoid repeated freeze.
Uniprot No.	Q9Y3B7
Immunogen	Recombinant Human 39S ribosomal protein L11, mitochondrial protein (1-191AA)
Raised In	Rabbit
Species Reactivity	Human
Tested Applications	ELISA, WB, IF; Recommended dilution: WB:1:1000-1:5000, IF:1:50-1:200
Form	Liquid
Conjugate	Non-conjugated
Storage Buffer	Preservative: 0.03% Proclin 300 Constituents: 50% Glycerol, 0.01M PBS, PH 7.4
Purification Method	>95%, Protein G purified
Isotype	IgG
Clonality	Polyclonal
Alias	39S ribosomal protein L11, mitochondrial (L11mt) (MRP-L11) (Mitochondrial large ribosomal subunit protein uL11m), MRPL11
Immunogen Species	Homo sapiens (Human)
Research Area	Cell Biology
Target Names	MRPL11

Image



Western blot

All lanes: MRPL11 antibody at 16µg/ml

Lane 1: HepG2 whole cell lysate

Lane 2: HeLa whole cell lysate

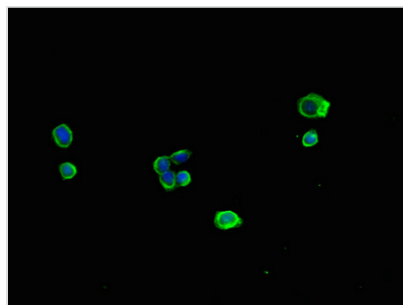
Lane 3: A549 whole cell lysate

Secondary

Goat polyclonal to rabbit IgG at 1/10000 dilution

Predicted band size: 21, 19, 20 kDa

Observed band size: 21 kDa



Immunofluorescent analysis of HepG2 cells using CSB-PA896709LA01HU at dilution of 1:100 and Alexa Fluor 488-conjugated AffiniPure Goat Anti-Rabbit IgG(H+L)

Usage

For Research Use Only. Not for use in diagnostic or therapeutic procedures.