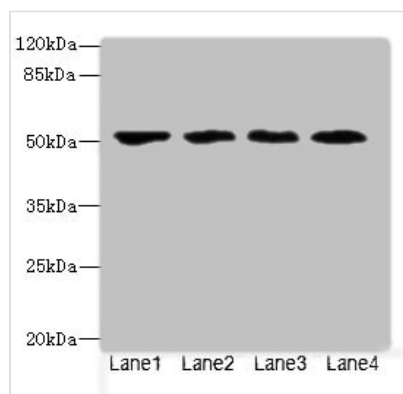




# LRRC42 Antibody

|                            |  |
|----------------------------|--|
| <b>Product Code</b>        | CSB-PA896899LA01HU   |
| <b>Storage</b>             | Upon receipt, store at -20°C or -80°C. Avoid repeated freeze.                    |
| <b>Uniprot No.</b>         | Q9Y546   |
| <b>Immunogen</b>           | Recombinant Human Leucine-rich repeat-containing protein 42 protein (201-428AA)  |
| <b>Raised In</b>           | Rabbit   |
| <b>Species Reactivity</b>  | Human  |
| <b>Tested Applications</b> | ELISA, WB, IHC; Recommended dilution: WB:1:1000-1:5000, IHC:1:20-1:200           |
| <b>Form</b>                | Liquid   |
| <b>Conjugate</b>           | Non-conjugated   |
| <b>Storage Buffer</b>      | Preservative: 0.03% Proclin 300<br>Constituents: 50% Glycerol, 0.01M PBS, PH 7.4 |
| <b>Purification Method</b> | >95%, Protein G purified   |
| <b>Isotype</b>             | IgG  |
| <b>Clonality</b>           | Polyclonal   |
| <b>Alias</b>               | Leucine-rich repeat-containing protein 42, LRRC42                                |
| <b>Immunogen Species</b>   | Homo sapiens (Human)   |
| <b>Research Area</b>       | Others   |
| <b>Target Names</b>        | LRRC42   |

## Image



### Western blot

All lanes: LRRC42 antibody at 10μg/ml

Lane 1: MCF-7 whole cell lysate

Lane 2: A549 whole cell lysate

Lane 3: HCT116 whole cell lysate

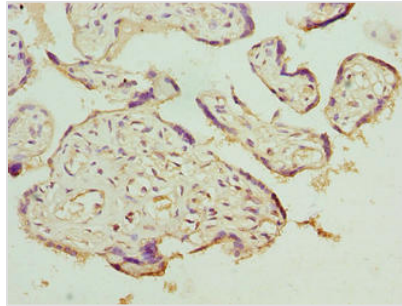
Lane 4: Colo320 whole cell lysate

Secondary

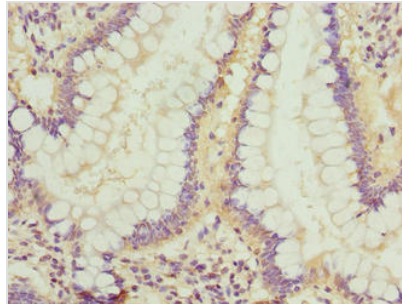
Goat polyclonal to rabbit IgG at 1/10000 dilution

Predicted band size: 49 kDa

Observed band size: 49 kDa



Immunohistochemistry of paraffin-embedded human placenta tissue using CSB-PA896899LA01HU at dilution of 1:100



Immunohistochemistry of paraffin-embedded human small intestine tissue using CSB-PA896899LA01HU at dilution of 1:100