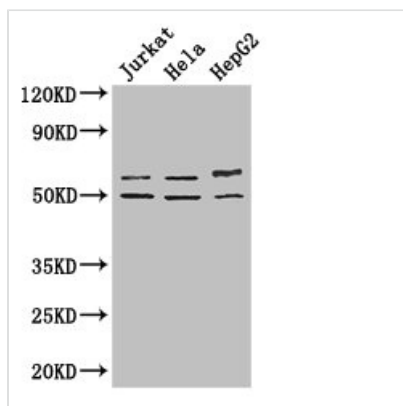




YTHDF2 Antibody

Product Code	CSB-PA896902LA01HU
Storage	Upon receipt, store at -20°C or -80°C. Avoid repeated freeze.
Uniprot No.	Q9Y5A9
Immunogen	Recombinant Human YTH domain-containing family protein 2 protein (201-500AA)
Raised In	Rabbit
Species Reactivity	Human
Tested Applications	ELISA, WB, IHC, IF; Recommended dilution: WB:1:2000-1:5000, IHC:1:20-1:200, IF:1:50-1:200
Form	Liquid
Conjugate	Non-conjugated
Storage Buffer	Preservative: 0.03% Proclin 300 Constituents: 50% Glycerol, 0.01M PBS, PH 7.4
Purification Method	>95%, Protein G purified
Isotype	IgG
Clonality	Polyclonal
Alias	YTH domain-containing family protein 2 (CLL-associated antigen KW-14) (High-glucose-regulated protein 8) (Renal carcinoma antigen NY-REN-2), YTHDF2, HGRG8
Immunogen Species	Homo sapiens (Human)
Research Area	Cell Biology
Target Names	YTHDF2

Image



Western Blot

Positive WB detected in: Jurkat whole cell lysate, HeLa whole cell lysate, HepG2 whole cell lysate

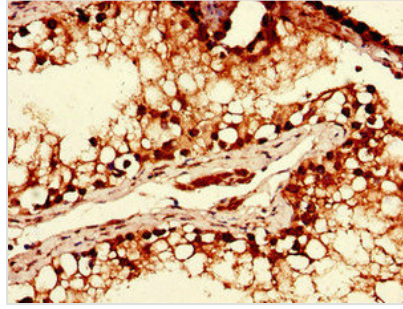
All lanes: YTHDF2 antibody at 2.7µg/ml

Secondary

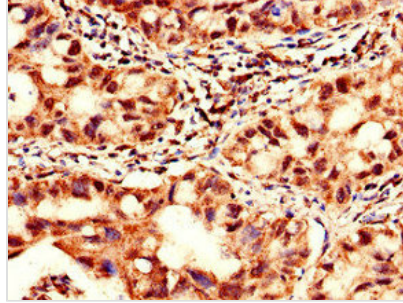
Goat polyclonal to rabbit IgG at 1/50000 dilution

Predicted band size: 63, 57 kDa

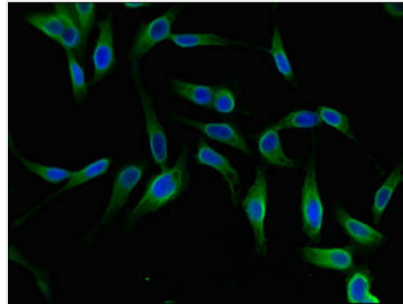
Observed band size: 63, 50 kDa



Immunohistochemistry of paraffin-embedded human testis tissue using CSB-PA896902LA01HU at dilution of 1:100



Immunohistochemistry of paraffin-embedded human lung cancer using CSB-PA896902LA01HU at dilution of 1:100



Immunofluorescent analysis of HeLa cells using CSB-PA896902LA01HU at dilution of 1:100 and Alexa Fluor 488-conjugated AffiniPure Goat Anti-Rabbit IgG(H+L)

Usage

For Research Use Only. Not for use in diagnostic or therapeutic procedures.