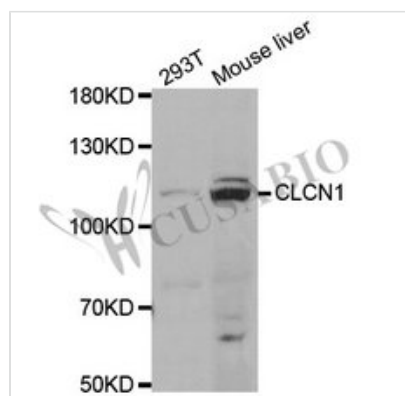




# CLCN1 Antibody

<b>Product Code</b>	CSB-PA005480
<b>Storage</b>	Upon receipt, store at -20°C or -80°C. Avoid repeated freeze.
<b>Uniprot No.</b>	P35523
<b>Immunogen</b>	Recombinant protein of Human CLCN1.
<b>Raised In</b>	Rabbit
<b>Species Reactivity</b>	Human
<b>Tested Applications</b>	WB; Recommended dilution: Western blotting: 1:500~1:2000
<b>Form</b>	Liquid
<b>Conjugate</b>	Non-conjugated
<b>Storage Buffer</b>	Supplied at 1.0mg/mL in phosphate buffered saline (without Mg <sup>2+</sup> and Ca <sup>2+</sup> ), pH 7.4, 150mM NaCl, 0.02% sodium azide and 50% glycerol.
<b>Purification Method</b>	Antibodies were purified by affinity purification using immunogen.
<b>Isotype</b>	IgG
<b>Clonality</b>	Polyclonal
<b>Alias</b>	Chloride channel protein 1, Chloride channel protein, skeletal muscle, CLCN1, CLC1
<b>Immunogen Species</b>	Homo sapiens (Human)
<b>Target Names</b>	CLCN1

## Image



Western blot analysis of extracts of various cell lines, using CLCN1 antibody.