

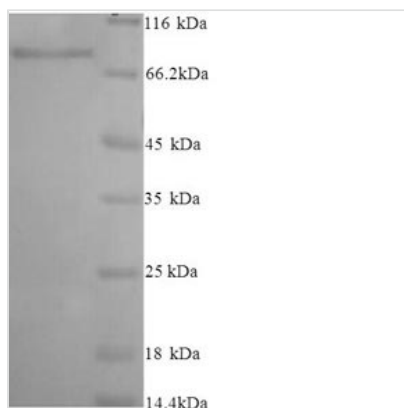


Recombinant Human Inactive N-acetylated-alpha-linked acidic dipeptidase-like protein 2 (NAALADL2), partial

Product Code	CSB-YP704507HU
Abbreviation	Recombinant Human NAALADL2 protein, partial
Storage	The shelf life is related to many factors, storage state, buffer ingredients, storage temperature and the stability of the protein itself. Generally, the shelf life of liquid form is 6 months at -20°C/-80°C. The shelf life of lyophilized form is 12 months at -20°C/-80°C.
Uniprot No.	Q58DX5
Product Type	Recombinant Protein
Immunogen Species	Homo sapiens (Human)
Purity	Greater than 90% as determined by SDS-PAGE.
Sequence	<p> GYYVHTNCPSDAPSSGTVDPQLYQEILKTIQAEDIKKSFRNLVQLYKNEDDMEI SKKIKTQWTSLGLEDEVQFVNYSVLLDLPGPSPSTVTLSSSGQCFHPNGQPCSE EARKDSSQDLLYSYAAYSAGKTLKAEVIDVSYGMADDLKRIRKIKNVTNQIALLK LGKLPLLYKLSSLEKAGFGGVLLYIDPCDLPKTVNPSHDTFMVSLNPGGDPSTP GYPSVDEFRQSRSNLTSLLVQPISAPLVAKLISSPKARTKNEACSSLELPNNEI RVVSMQVQTVTKLKTVTNVVGFVMGLTSPDRYIIVGSHHHTAHSYNGQEWAS STAITAFIRALMSKVKRGWRPDRTIVFCSWGGTAFGNIGSYEWGEDFKKVLQ KNVVAYISLHSPIRGNSSLYPVASPSLQQLVVEKNNFNCTRRAQCPETNISSIQI QGDADYFINHLGVPVIVQFAYEDIKTLLEGPSFLSEARFSTRATKIEEMDPSFNLHE TITKLSGEVILQIANEPVLPFNALDIALEVQNNLKGDPNTHQLLAMALRLRESA ELFQSDEMPPANDPKERAPIRIRMLNDILQDMEKSFLVKQAPPGFYRNILYHLD EKTSRFSILIEAWEHCKPLASNETLQEALSEVLNSINSAQVYFKAGLDVFKSVLD GKN </p>
Research Area	Cell Biology
Source	Yeast
Target Names	NAALADL2
Protein Names	Recommended name: Inactive N-acetylated-alpha-linked acidic dipeptidase-like protein 2 Short name= NAALADase L2
Expression Region	143-795aa
Notes	Repeated freezing and thawing is not recommended. Store working aliquots at 4°C for up to one week.
Tag Info	N-terminal 6xHis-tagged
Mol. Weight	74.6kDa
Protein Length	Extracellular Domain



Image



(Tris-Glycine gel) Discontinuous SDS-PAGE (reduced) with 5% enrichment gel and 15% separation gel.

Reconstitution

We recommend that this vial be briefly centrifuged prior to opening to bring the contents to the bottom. Please reconstitute protein in deionized sterile water to a concentration of 0.1-1.0 mg/mL. We recommend to add 5-50% of glycerol (final concentration) and aliquot for long-term storage at -20°C/-80°C. Our default final concentration of glycerol is 50%. Customers could use it as reference.

Shelf Life

The shelf life is related to many factors, storage state, buffer ingredients, storage temperature and the stability of the protein itself.

Generally, the shelf life of liquid form is 6 months at -20°C/-80°C. The shelf life of lyophilized form is 12 months at -20°C/-80°C.