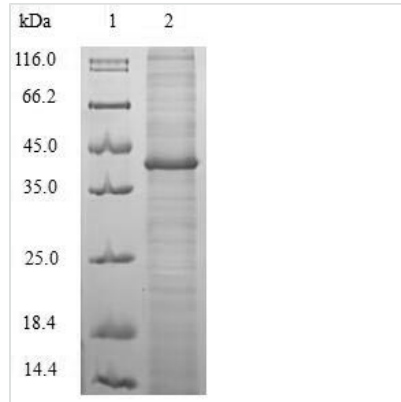


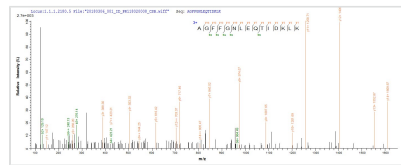


Recombinant Helicobacter pylori Cytotoxicity-associated immunodominant antigen (cagA), partial

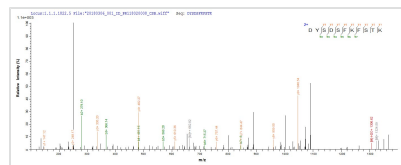
Product Code	CSB-EP301307HUS
Relevance	May be necessary for the transcription, folding, export, or function of the cytotoxin.
Abbreviation	Recombinant Helicobacter pylori cagA protein, partial
Storage	The shelf life is related to many factors, storage state, buffer ingredients, storage temperature and the stability of the protein itself. Generally, the shelf life of liquid form is 6 months at -20°C/-80°C. The shelf life of lyophilized form is 12 months at -20°C/-80°C.
Uniprot No.	P80200
Alias	120 kDa protein
Product Type	Recombinant Protein
Immunogen Species	Helicobacter pylori (Campylobacter pylori)
Purity	Greater than 90% as determined by SDS-PAGE.
Sequence	KVNAKIDRLNQIASGLGVVGQAAGFPLKRHDKVDDL SKVGLSRNQELAQKIDN LNQAVSEAKAGFFGNLEQTIDKLDSTKHNPMLWVESAKKVPASLSAKLDNY ATNSHIRINSNIKNGAINEKATGMLTQKNPEWLKLVNDKIVAHNVGVSPLSEYD KIGFNQKNMKDYSDSFKFSTKLNNAVKDTNSGFTQFLTNAFSTASYCLAREN AEHGKKNVNTKGGFQKS
Research Area	Microbiology
Source	E.coli
Target Names	cagA
Expression Region	918-1147aa
Notes	Repeated freezing and thawing is not recommended. Store working aliquots at 4°C for up to one week.
Tag Info	N-terminal 6xHis-SUMO-tagged
Mol. Weight	41.3kDa
Protein Length	Partial
Image	



(Tris-Glycine gel) Discontinuous SDS-PAGE (reduced) with 5% enrichment gel and 15% separation gel.



Based on the SEQUEST from database of E.coli host and target protein, the LC-MS/MS Analysis result of CSB-EP301307HUS could indicate that this peptide derived from E.coli-expressed Helicobacter pylori (Campylobacter pylori) cagA.



Based on the SEQUEST from database of E.coli host and target protein, the LC-MS/MS Analysis result of CSB-EP301307HUS could indicate that this peptide derived from E.coli-expressed Helicobacter pylori (Campylobacter pylori) cagA.

Reconstitution

We recommend that this vial be briefly centrifuged prior to opening to bring the contents to the bottom. Please reconstitute protein in deionized sterile water to a concentration of 0.1-1.0 mg/mL. We recommend to add 5-50% of glycerol (final concentration) and aliquot for long-term storage at -20°C/-80°C. Our default final concentration of glycerol is 50%. Customers could use it as reference.

Shelf Life

The shelf life is related to many factors, storage state, buffer ingredients, storage temperature and the stability of the protein itself. Generally, the shelf life of liquid form is 6 months at -20°C/-80°C. The shelf life of lyophilized form is 12 months at -20°C/-80°C.